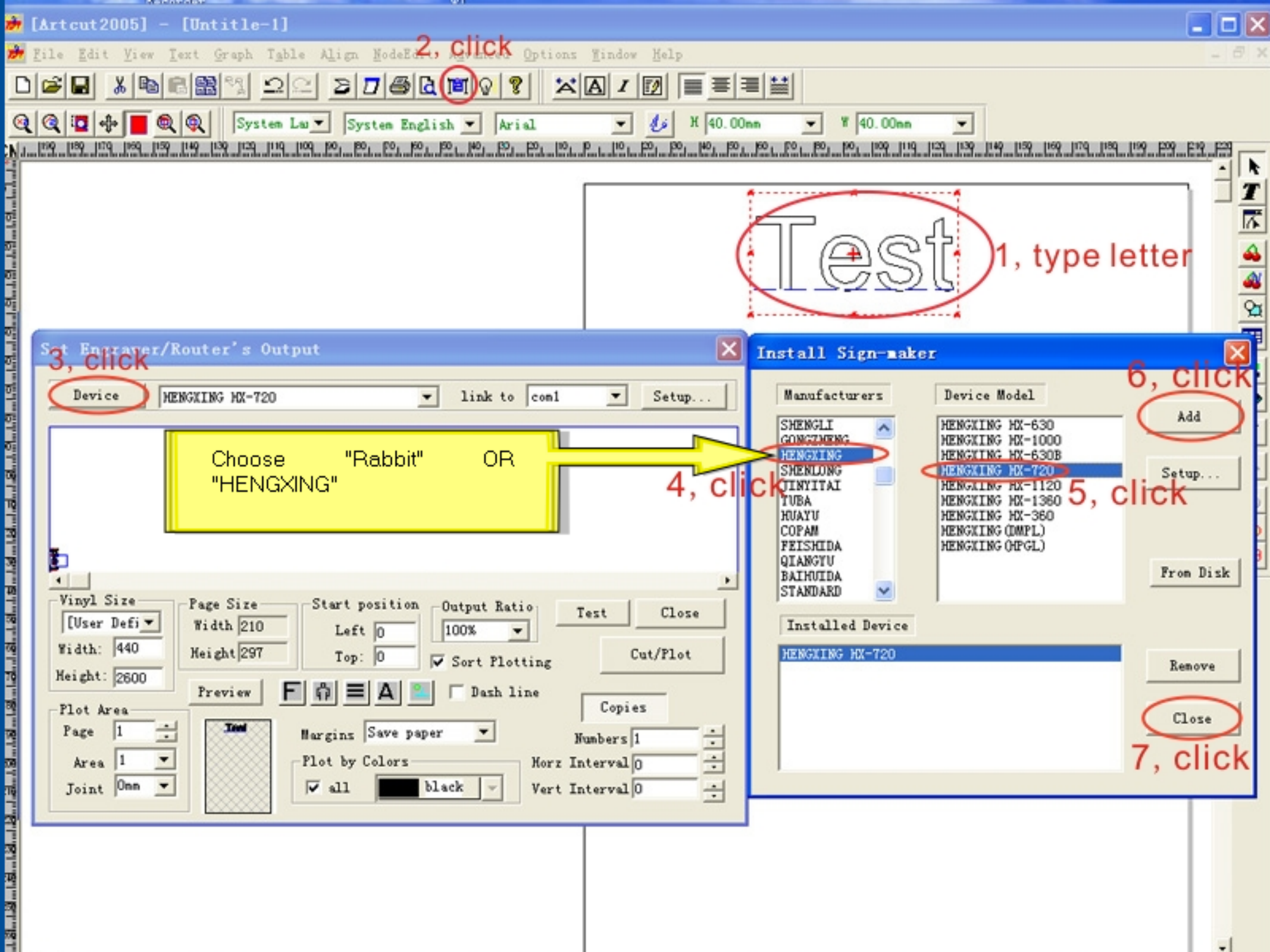


When you receive plotter, you should get the 2 CDs , "Artcut software" CD-A and "Artcut Graphic Disc".CD-B

There is a serial number in CD-B. Artcut software will read serial number every month or somedays not sure, don't lose the both of CDs, keep them safe place.

1, First insert CD-A, run Artcut, after the installation, click artcut icon, you will get "insert CD " information.simply insert CD-B, artcut will read serial number from CD-B, after that, Artcut can be open. then remove CD-B.

2, If Artcut ask " insert CD " someday when you open Artcut, just insert CD-B, If you lost CD-B, will get trouble.



2, click

1, type letter

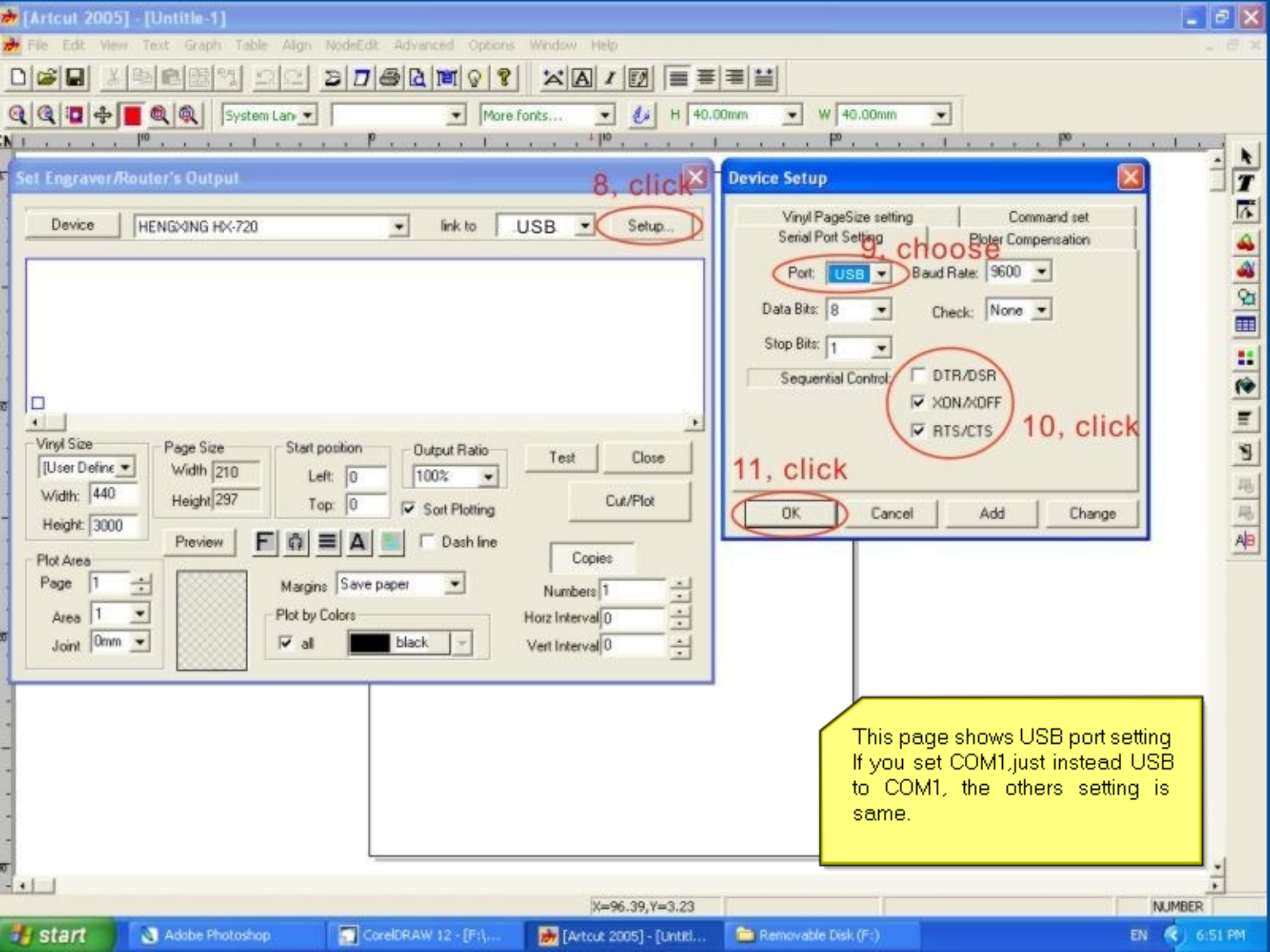
3, click

4, click

6, click

5, click

7, click



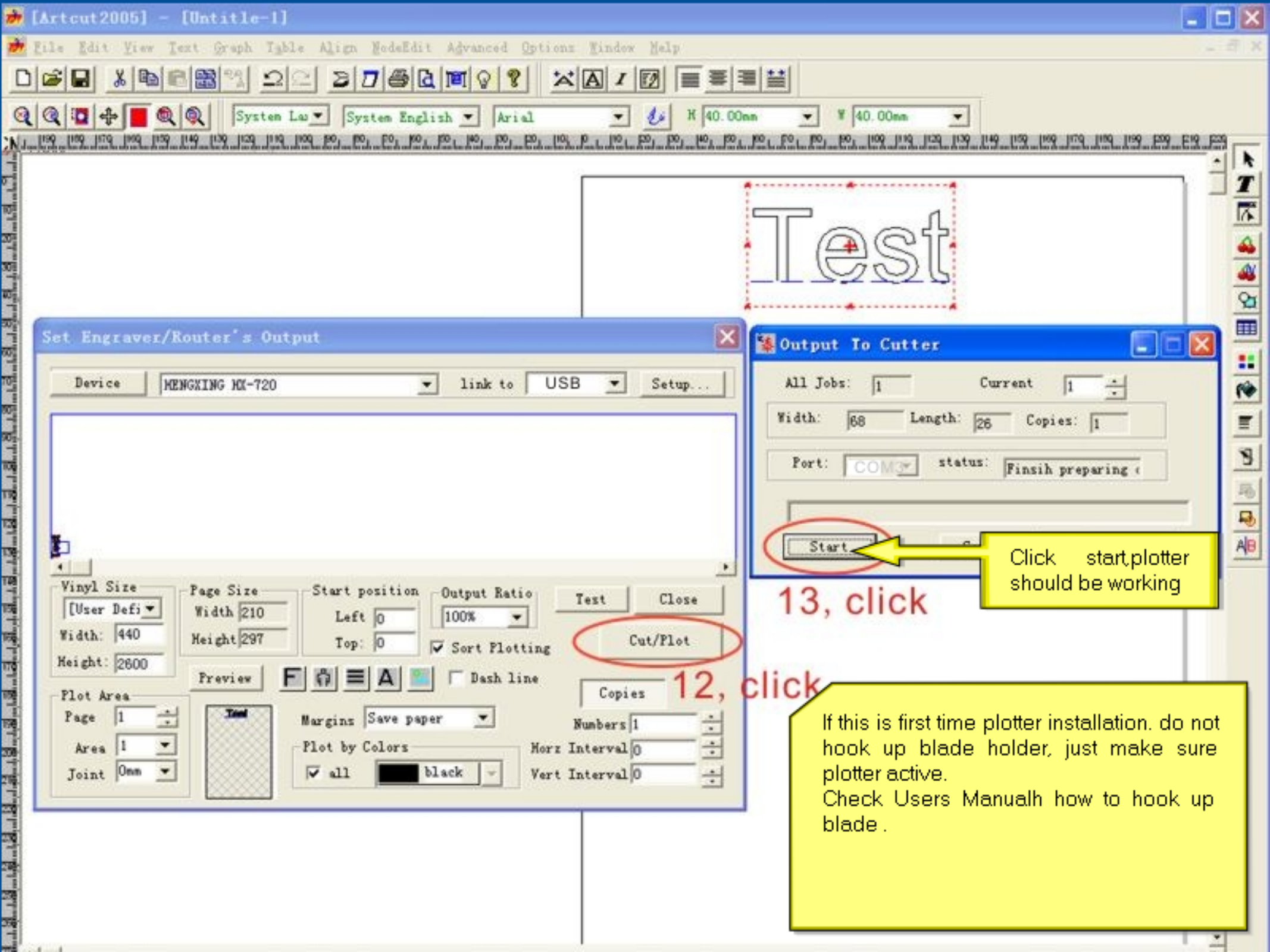
8, click

9, choose

10, click

11, click

This page shows USB port setting
If you set COM1, just instead USB
to COM1, the others setting is
same.



Set Engraver/Router's Output

Device: link to: Setup...

Vinyl Size: [User Defi] Page Size: Width: 210 Height: 297 Start position: Left: 0 Top: 0 Output Ratio: 100% Sort Plotting

Width: 440 Height: 2600

Plot Area: Page: 1 Area: 1 Joint: 0mm

Margins: Save paper Plot by Colors: all black

Horz Interval: 0 Vert Interval: 0

Numbers: 1

Cut/Plot

Output To Cutter

All Jobs: 1 Current: 1

Width: 68 Length: 26 Copies: 1

Port: COM3 status: Finsih preparing

Start

Click start,plotter should be working

13, click

12, click

If this is first time plotter installation, do not hook up blade holder, just make sure plotter active. Check Users Manualh how to hook up blade .

Check the setting again

1. Did you keep CD-A ,CD-B a safe place.
2. Did you set device "Rabbit" or HONGXING"
3. Did you set "USB" or COM1 (if you chooes COM1 port as output)
4. Did you select "XON/XOFF" , "RTS/CTS".

Any qusetions contact me at
<http://asc365.net>