

4 Color 4 Station Screen Press Installation Manual

One Installing Rack

a. Install four balance foot stands.



b. Install four bottom level beams.



c. Install four vertical beams.



d. Install four upside level beam

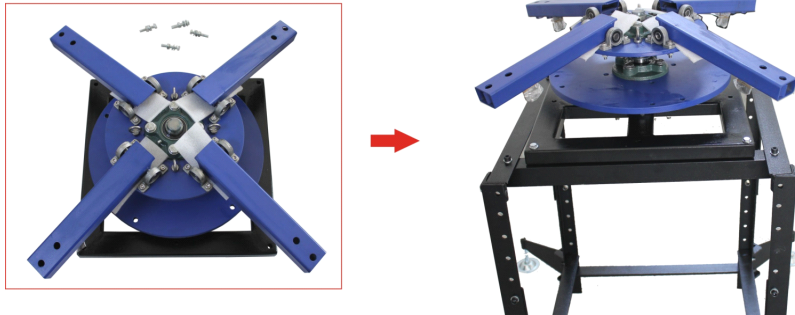


e. Tighten all the screws.

Note: When the rack installation has been finished, tighten all the screws.

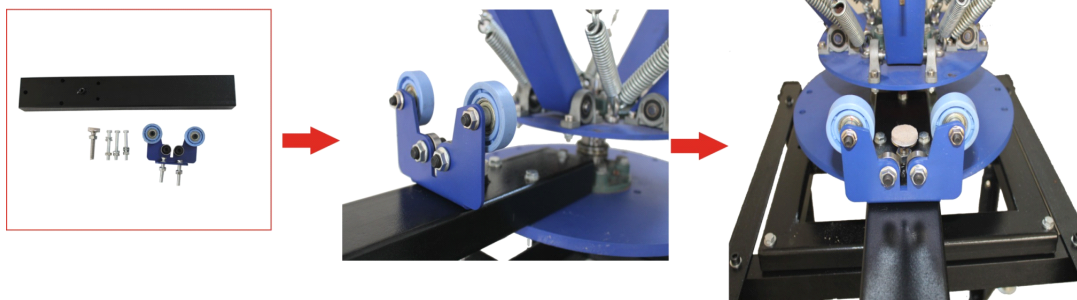
Two Installing Mainframe

Put the mainframe on the rack and tighten the connecting screws.



Three Installing Pallet Support Arms and Orientation Blocks

- Install the orientation blocks and pallet support arm.
- Install the control pad for balancing printing head support arm during up-and-down adjusting process.

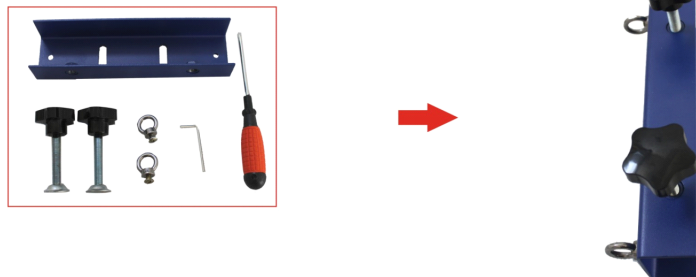


Notes:

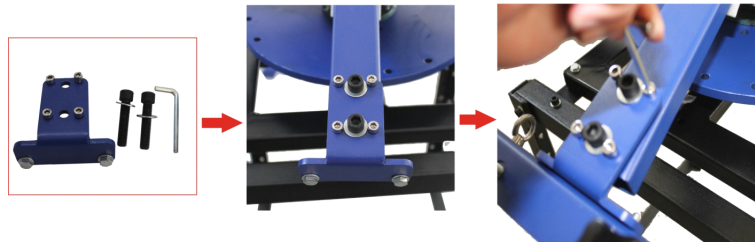
- Do not tighten the screws when the pallet support arm installation is finished.
- Do not tighten the screws when the orientation blocks installation is finished.
(When the mainframe and the printing head adjustment are finished, then you can tighten the screws.)

Four Installing Parts of Mainframe Upper Turntable

- Install the collet knobs (8 pcs) of the printing head.
- Install the stainless steel rings (8 pcs).



c. Connect the printing head collets and the position collet fastenings by tightening 8 screws.

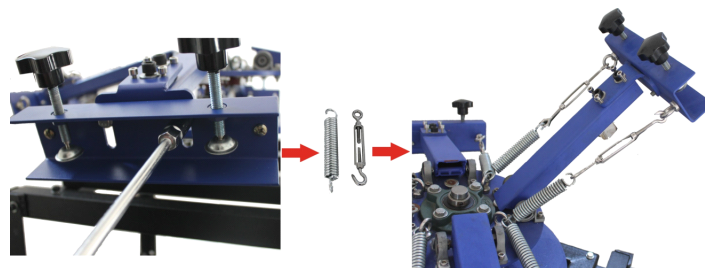


d. Fix printing head collets and fastenings on the pallet support arms by tightening 8 screws.

e. Connect the springs and the stainless steel rings of collets by loosened turn-buckles.

f. Fasten the position knobs (4 pcs) for adjusting up-and-down height of the printing head support arm.

g. Adjust the turn-buckle to a proper strength to make it easy for support arm uplifting and down.



Close Attention: All four arms of printing head have been position-adjusted and all the screws have been tightened before delivery; please do not adjust these screws of the printing head support arms during installation and operation.

Five Micro Adjusting the Mainframe for Precision Position

a. Uplift all the printing heads and twirl the bottom turntable; then put them down according to the center of the orientation blocks.

b. Micro adjust the black pallet support arms to make sure it is easy to put up and down the printing head support arms, then tighten the screws of connecting pallet support arms and the bottom turntable.

c. Fasten the orientation blocks on the pallet support arms.

After the adjustment of the black pallet support arms, with all the printing heads putting down, micro adjust the orientation block to make sure it is easy to put up and down the printing head support arms, tighten screws of the orientation blocks, and then they have been fixed on the pallet support arms.

d. Keep the two big wheel blocks in two sides and fasten them to prevent problems of printing deviating.

e. Keep the two bottom orientation blocks inside and tighten them.

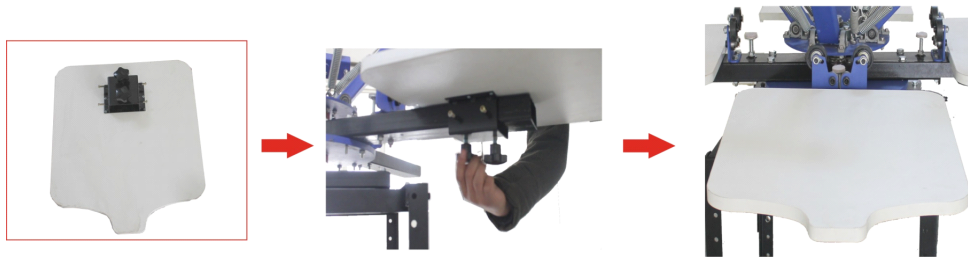
f. Uplift all the printing heads, rotate the upper or bottom turntable and then randomly put them down to check the condition of going up and down.

Close Attention: If some printing heads can not be well put down, you can only adjust the pallet support arm, the block wheel stand and the small orientation block; the printing head support arms must not be adjusted.

Six Installing Pallet

- a. Install the bracket on the pallet according to the position of holes.
- b. Install knobs on the pallet brackets.
- c. Fasten the pallets on the support arms.

Put down the printing heads, adjust and position the pallets on the place of 3-5mm (0.1" - 0.2") distance from the printing head collets by tighten the bottom bracket knobs and the screws on the two sides of the brackets.



Seven Finished Installation



ASC365 International Ltd
<http://asc365.com>