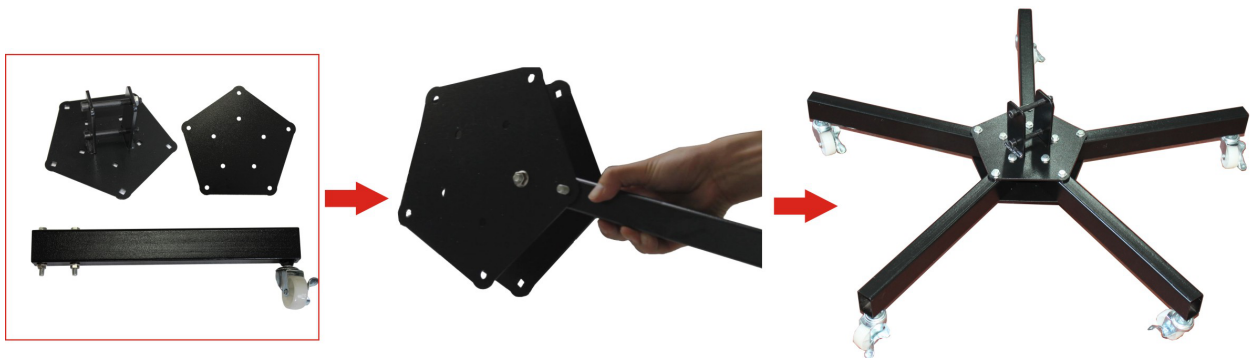


Installation Diagram of ASC-DB110 Flash Dryer with Two Drying Platform

One: Installing the Bottom Base

1. Remove the screws off the base with truckles included;
2. Fix the base with truckles included onto the Junction Block A;
3. Tighten the screws.

Note: If it's not flat on the floor after installation, please adjust the truckles and then tighten them.



Two: Connecting the Base and the Knighthead

1. Loosen the screw of the chromium-plated tube to guarantee it well fixed into the black knighthead;
2. Put the Chromium-plated Tube into the Knighthead; Select the proper position and then tighten the two screws of the black knighthead.
3. Remove the two screws of the base, connect the base and the knighthead and then tighten the screws.

Note: Please keep the three screws in a line, just as shown in the following picture.



Three: Installing the Two Drying Platforms onto the Knighthead

1. Fix the junction blocks onto the chromium-plated tube;

Note: Please keep the screws in a line just as shown in the following picture.
2. Connect the two drying platforms with the junction blocks and then tighten them.

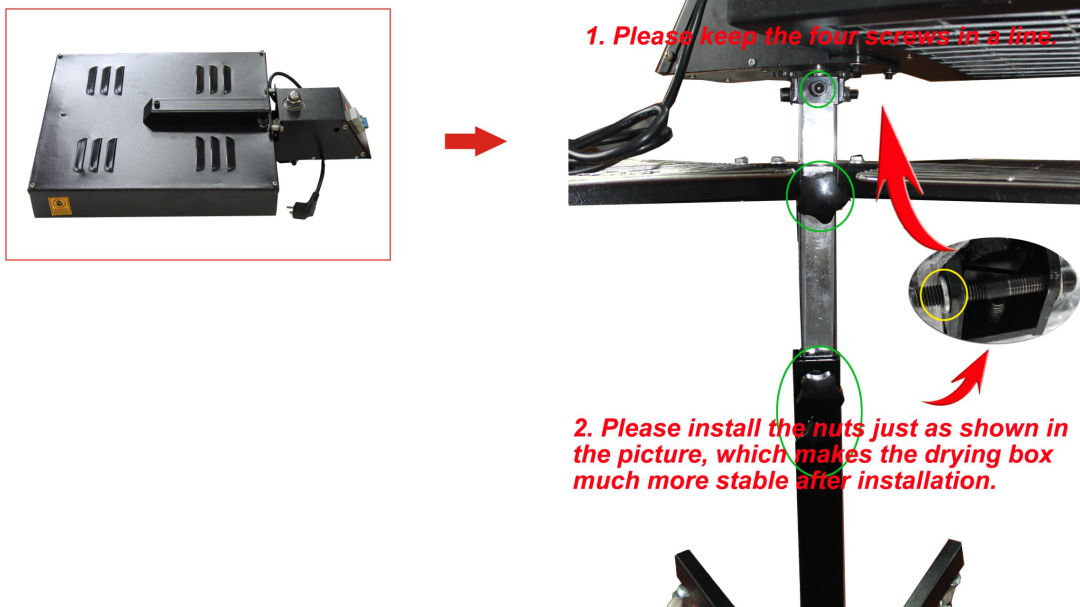


Note: a. The height of the drying box could be adjusted: only loosen the two bottom screws on the black knighthead, lift or lower the drying head according to your needs, then tighten them, that's ok.

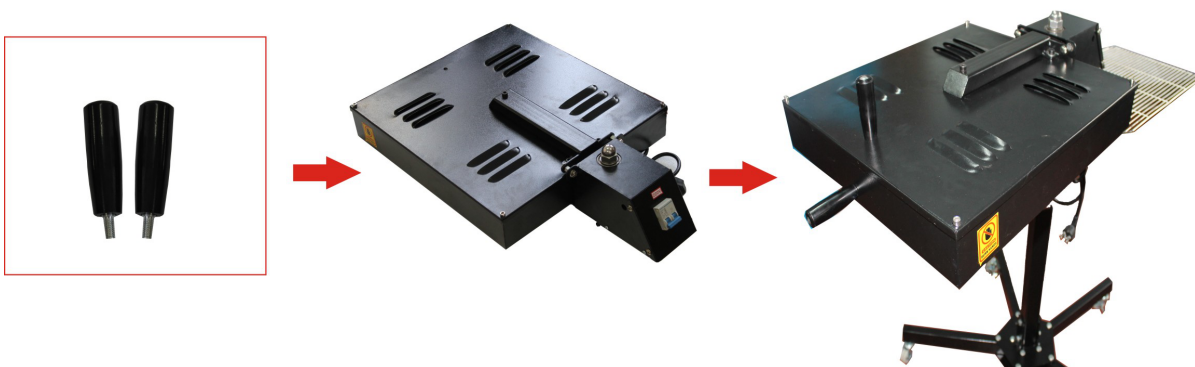
b. The height of the drying platform could be adjusted: only loosen the upper two screws on the chromium-plated tube, lift or lower the drying head according to your needs, then tighten them, that's ok.

Four: Installing the Drying Box

1. Install the drying box and fix it onto the knighthead;



2. Install the hand wheel.



Five: Finished Installation



Important Note: The machine can rotate 360°, so we strongly recommend to hang up the power line above the drying box while using.

ASC365 International Ltd.
<http://asc365.com>