

自动标签剥离机

AUTOMATIC LABEL DISPENSER

X-100、X-130

使用手册

INSTRUCTION MANUAL



使用前请阅读 Read Before Use

非常感谢您购买我公司自动标签剥离机X-100、X-130。X-100、X-130是一款非常紧凑、装备精良的机器，可以用来剥离各类标签。

We are thankful for your interest of our automatic label dispenser X100, 130. they are compact and renew high quality machines. It can strip all kinds of labels, also for non-adhesive labels.

请仔细阅读本使用手册。

Please read this Instruction Manual carefully.

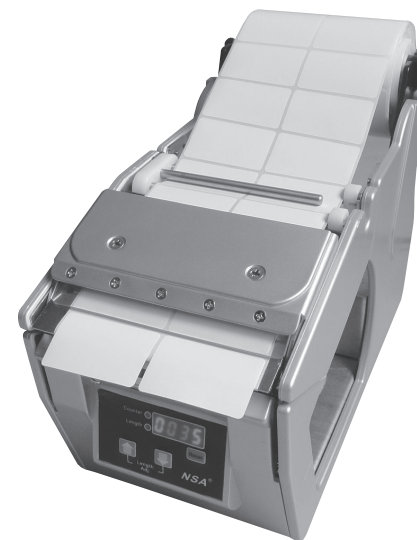
为了安全起见，请保留该手册，以备查阅、再培训与排除故障。

For your safety, please always keep this Instruction Manual for refering, retraining and trouble shooting.

目录 Contents

P2	使用前请阅读	Read Before Use
P3	标签剥离机规格	Label stripping machine specification
P4	操作板各部件名称	The handle plate spare parts name
P4-5	使用说明	Use Instruction
P6	模式设定	Mode Setting
P6-7	操作板的功能及使用方法	The handle plate function and use instruction
P7	底纸拆卸	Dismantle the use out label roll

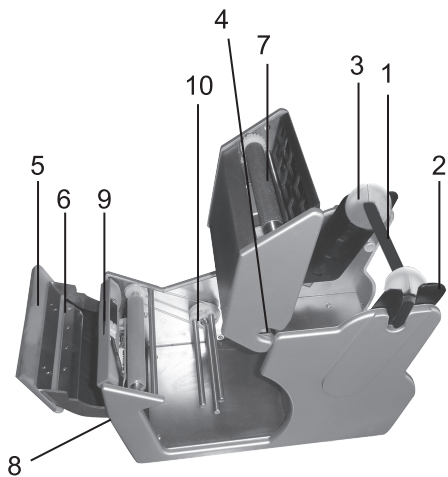
标签剥离机规格 Label stripping machine specification



型号 Item	X-100
规格 Demision	136 × 174 × 280mm (W × H × L)
速度 Speed	130mm/sec
标签宽度 Label width	5-100mm
最大直径 Max Dia	250mm
电源 Voltage	110/220V 50/60Hz
重量 Weight	3.6kg

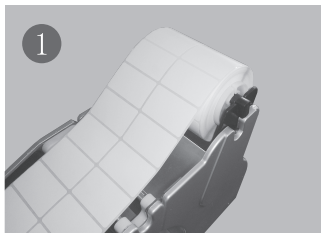
型号 Item	X-130
规格 Demision	166 × 174 × 280mm (W × H × L)
速度 Speed	130mm/sec
标签宽度 Label width	5-130mm
最大直径 Max Dia	250mm
电源 Voltage	110/220V 50/60Hz
重量 Weight	4.1kg

操作板各部件名称 The handle plate spare parts name



- | | |
|----------|-----------------------|
| 1. 卷筒挂杆 | 1. Roll hanging rod |
| 2. 卷筒挂板 | 2. Roll hanging board |
| 3. 定位板 | 3. Positioning plate |
| 4. 导板 | 4. Guide plate |
| 5. 压纸板 | 5. Paper press plate |
| 6. 联锁杆 | 6. Interlock lever |
| 7. 上装置 | 7. Upper device |
| 8. 操作板 | 8. Handle plate |
| 9. 标签感应器 | 9. Label sensor |
| 10. 卷纸器 | 10. Roll paper |

使用说明 Use Instruction



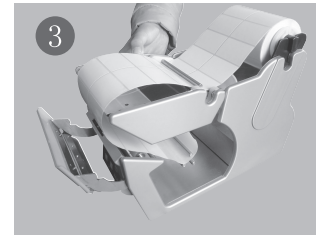
1. 挂标签纸卷, 如图将标签卷筒置挂在标签挂板上用定位板固定。

1. Wrapped the label on the hanging board as the picture shows and fix with positioning plate.



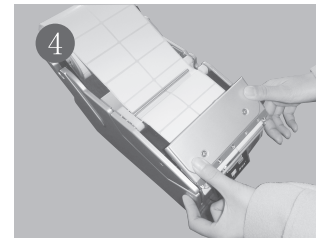
2. 夹入导板, 将标签纸夹入送纸导板的中间杆之间, 如图呈U形状, 按照标签宽度调整导板。

2. Insert the guide plate, then insert the label into between the label delivery board and the middle stick, shows U shape, then adjust the guide board according to the label width.



3. 将标签纸挂到卷纸器, 打开上装置将标签如图挂置于卷纸器的3根支杆中。

3. Please hang the label into the roll paper device, open the upper device and put the label into the 3 sticks of roll paper device.



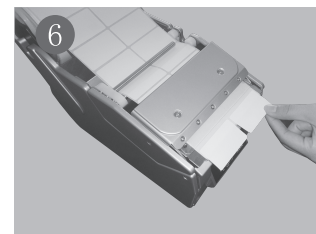
4. 盖上联锁杆, 按压纸板直到发出扣锁的声音。

4. Close the Interlock lever, press the paper press plate till hear the clocked alarming.



5. 电源开关, 打开右后方的电源开关。

5. Open the power switch which behind right direction.



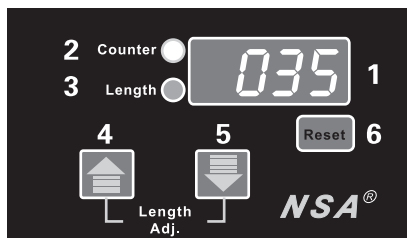
6. 使用图, 取出标签时请从下往上剥离。

6. When the machine in stripping labels, please get the labels from the bottom up.

如扯动标签, 会扯出标签底纸遮挡传感器, 请多加注意。

When you taking the label, it may cover the sensor by wrong way to get the label, please pay your attention to take the label in right way.

模式设定 Mode Setting



1. 显示窗
1. Display windows
2. 显示计数状态
2. Display in counting
3. 显示"剥离长度设置"状态
3. Displaying "stripping length"
4. 剥离长度设置增加键
4. Add label stripping length button
5. 剥离长度设置减少键
5. Reduce label stripping length button
6. 计数清零键
6. Zero clearing button

操作板的功能及使用方法 The handle plate function and use instruction

速度调整, 按住“Reset”键时, 红色和绿色LED将交替闪烁, 此时出现的1-10之间的数字为速度设置值, 可通过▲和▼键进行调整, 出厂设置一般为最高速度10。

The label stripping speed adjusting: click the "reset" button, then the red and green LED light will flashing alternately. It will shows the speed grade from 1-10, generally speaking, the label stripping speed is set well as the highest grade 10 before the machine sell out.



长度调整, 点击▼键时, 绿色LED亮起并转换为标签剥离长度设置状态。如需增加长度请加大数字, 要缩短长度请用数字增减键减少数字。设置完毕后放置5秒左右即可返回到计数的红色LED状态。

Length adjusting: click the button, green LED lightening and now it's in label stripping length condition. You can add or reduce the label stripping length as you want. When you set the length, then it will back to red LED in the display counter condition after 5 seconds.

注意: 设置的剥离长度大于标签长度时会不间断送出标签, 请多加注意。

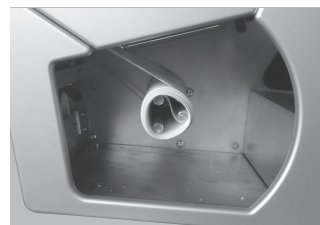
Note: If you set the label stripping length longer than the label length you use, it will strip the labels non-stop. Please pay your attention for it.



平时显示为红色LED的"计数显示器"状态, 显示窗中的数字是每次揭掉一个标签时累计的数量。在显示计数红色LED亮起状态下点击"计数重置"键, 计数的数字返回清零状态。

This button generally display red LED in "display counter" condition, the display windows display the figure which accumulated stripping pieces labels. When the display counter in red LED condition, Click the "figure account reset" button, it will back to zero clearing condition.

底纸拆卸 Dismantle the use out label roll



使用完毕后的标签底纸如图卷绕完整后用手包住取出即可。

When stripping out a full roll label, please take out the bottom label roll as the picture shows.