

CUTOK<sup>®</sup> Mini Cutting Plotter  
DC240/DC330  
USER'S MANUAL



Thank you for purchasing cutter CUTOK<sup>®</sup>. It can be used for cutting vinyl, heavy-cardstock, paper and sticker film as well as pen plotting.  
Please read this manual thoroughly and assure proper use of the equipment.

***Warning***

Only computers or peripherals (computer input/output devices, terminals, printers, etc.) certified as complying with the limits for a Class B digital device, pursuant to Part 15 of the FCC Rules, may be attached to this product when this product is operated in a residential environment. Operation with non-certified peripherals is likely to result in interference to radio and TV.

# CONTENTS

<b>1</b>	<b><i>General Information</i></b>	<b>3</b>
1.1	Introduction	
1.2	General Precautions	
1.3	Package Contents	
1.4	Introduction	
1.5	Control Panel	
<b>2</b>	<b><i>Connection to the computer</i></b>	<b>6</b>
2.1	Installation of power adapter	
2.2	Setup of the driver and software	
2.3	Connection to the Power	
2.4	Loading Media	
2.5	Useable size of material	
2.6	How to use the cutting mat	
<b>3</b>	<b><i>Blade and Drawing pen</i></b>	<b>18</b>
3.1	Introduction of Blade holder	
3.2	How to fix and setup the blade	
3.3	Drawing pen holder	
3.4	How to fix the holder	
3.5	testing	
<b>4</b>	<b><i>Working</i></b>	<b>20</b>
4.1	Working state manner	
4.2	Change the Speed	
4.3	Change the Force	
4.4	“Pause”State	
4.5	“Orientation” state	
4.6	Laser Orientation cutting and contour cutting	
<b>5</b>	<b><i>Specifications</i></b>	<b>23</b>

# Section 1                      General Information

## 1.1 Introduction

Thank you for purchasing the CUTOK<sup>®</sup> mini cutting plotter. CUTOK<sup>®</sup> is a plotter and vinyl cutter that connects to your computer. It can also cut different kinds of paper including sign paper enabling you to quickly and easily cut professional custom design sign that you have created on your computer using our basic sign editing software. In order to make full use of this machine, please be sure to read through this user manual before commencing any work.

## 1.2 General Precautions

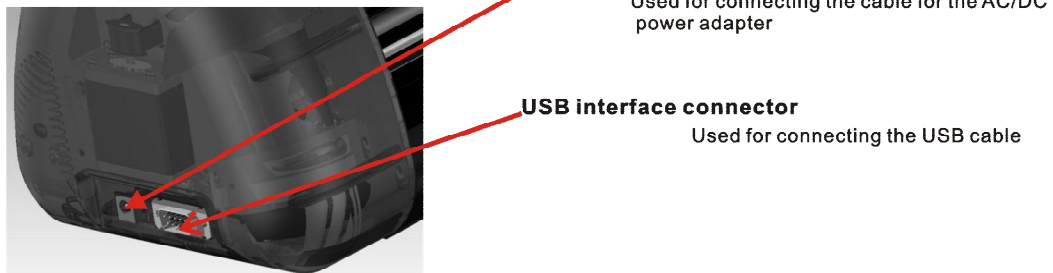
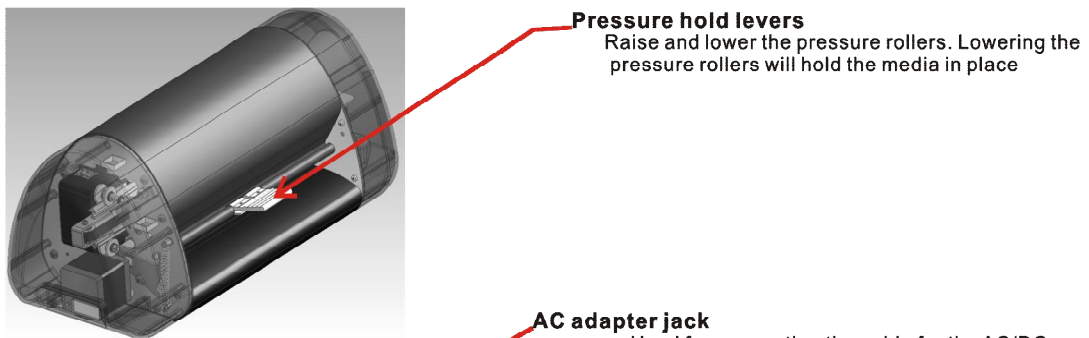
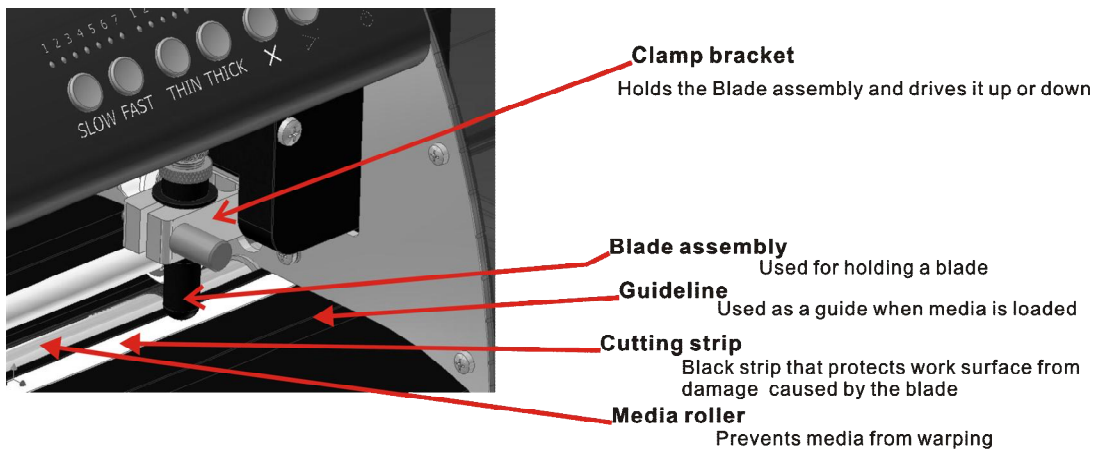
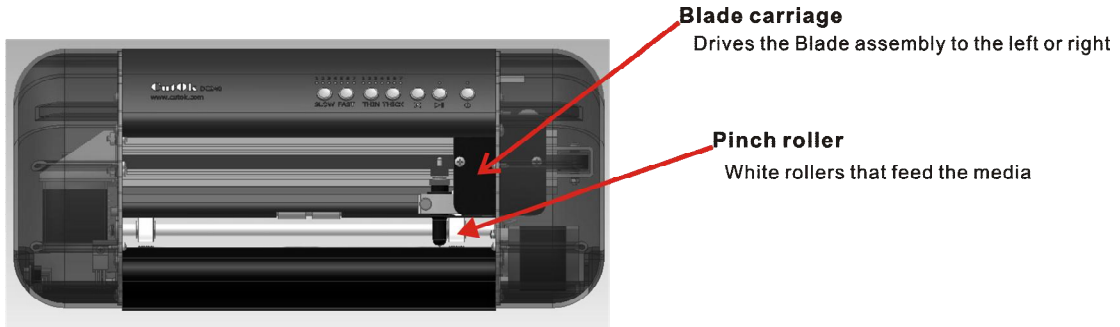
- ★Do not use damaged cord or plug.
  
- ★The top of blade should extend between 0.1—0.5mm, no less than 0.1mm and no more than 0.5mm in order to work properly, If the blade extends too much, it will damage the layering and affect the quality of the cutting.
  
- ★Don't move the tool carriage rapidly with hands.
  
- ★Don't not expose the mini cutting plotter to direct sunlight

## 1.3 Package Contents

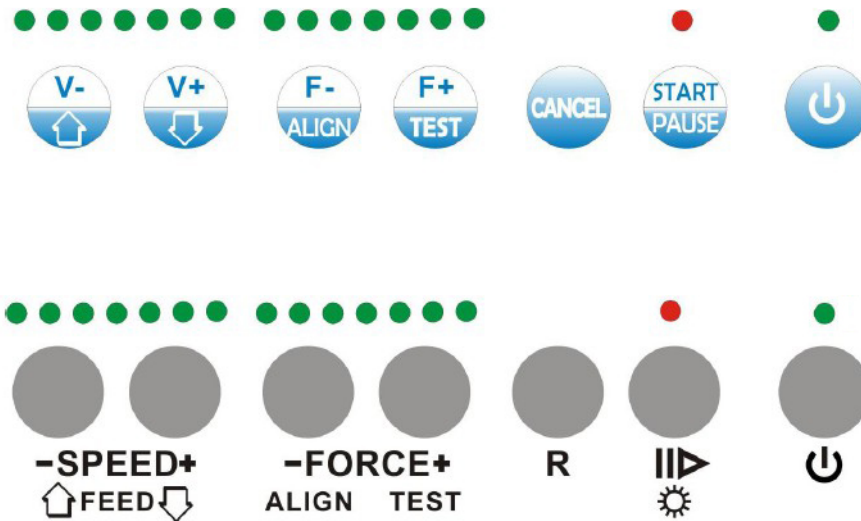
Check that the package contains the following items before using your mini cutting plotter .If any item is missing or damaged, please contact with vendor or distributor where the mini cutting plotter was purchased.




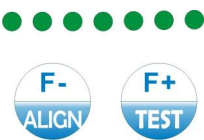
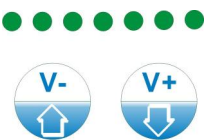
No.	Article	Quantity
1	AC adapter	1
2	AC adapter Power cable	1
3	Blade and Blade holder	1
4	Pen holder	1
5	USB cable	1
6	Software CD	1
7	Cutting Mat	2

## 1.4 Introduction of Components



## 1.5 Control Panel



	<p>Power on/off LED</p> <p>Standby switch Turns the cutter on and off</p>
	<p>STATUS LED OFF ON-LINE status = ready to receive data from host computer ON OFF-LINE status FLASHING Registration mark</p> <p>Status button</p>
	<p>Restart button</p>
	<p>FORCE control button F- = decreasing force on the tool F+= increasing force on the tool</p>
	<p>SPEED /Paper Move control button</p>

## Section 2 *Connection to the computer*

### 2.1 *Installation of power adapter*

The cutter uses a 16V/2.5A adapter.

#### **Steps 1:**

- A. Plug power adapter into mini cutter.
- B. Plug power lead from adapter to mains AC power. .

#### **Steps 2:**

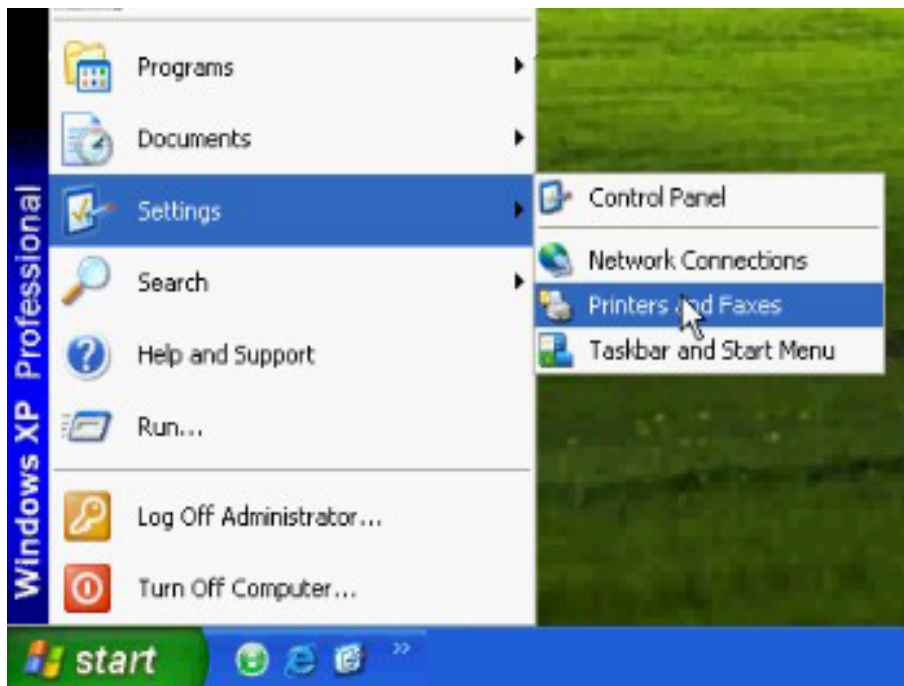
- A. Make sure the power is switched off.
- B. Connect the USB cable supplied from the Mini cutter to your computer.
- C. Turn on your computer and then turn on the Mini cutter. You should turn on the computer first then turn on the Mini cutter. The blade carriage will return to the original position.

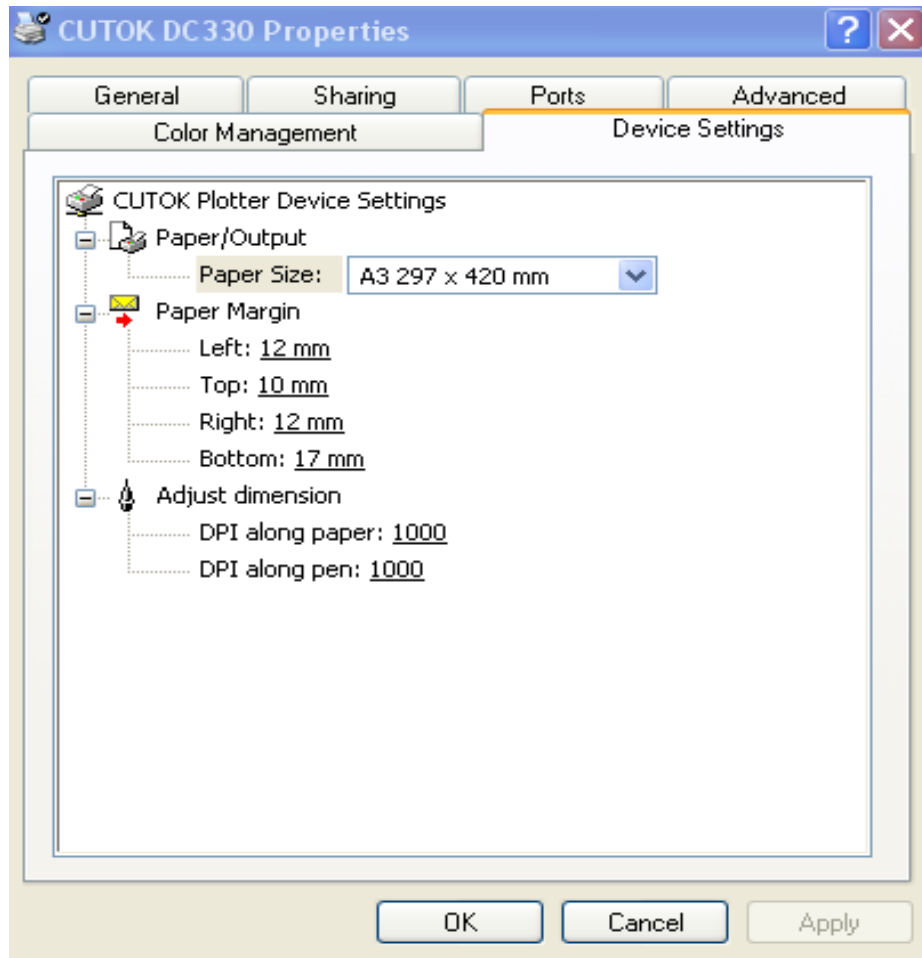
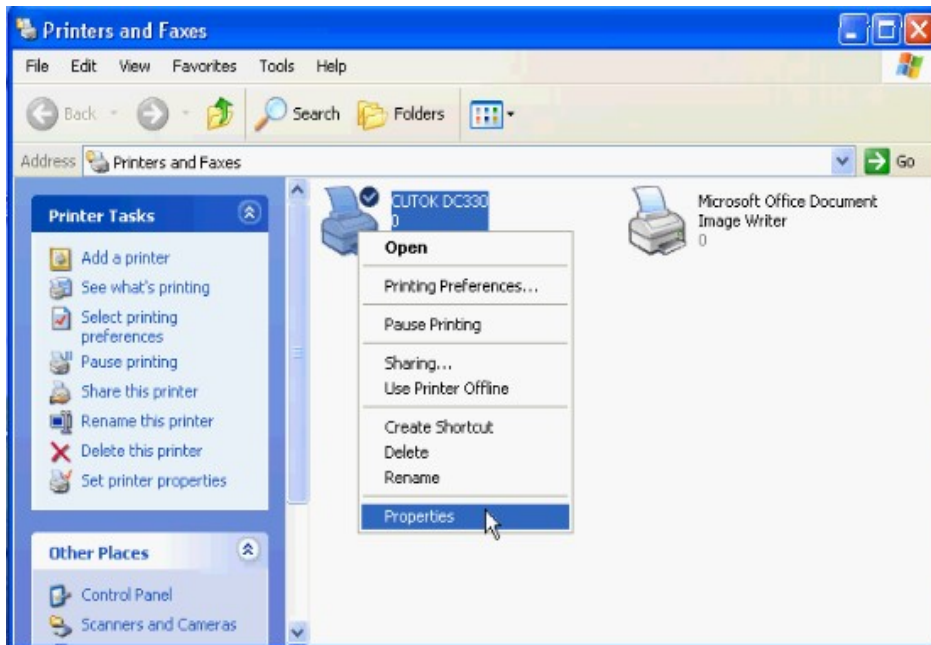
### 2.2 *Setup of the driver and software*

#### **Steps 1:** Install the driver and check the parameters

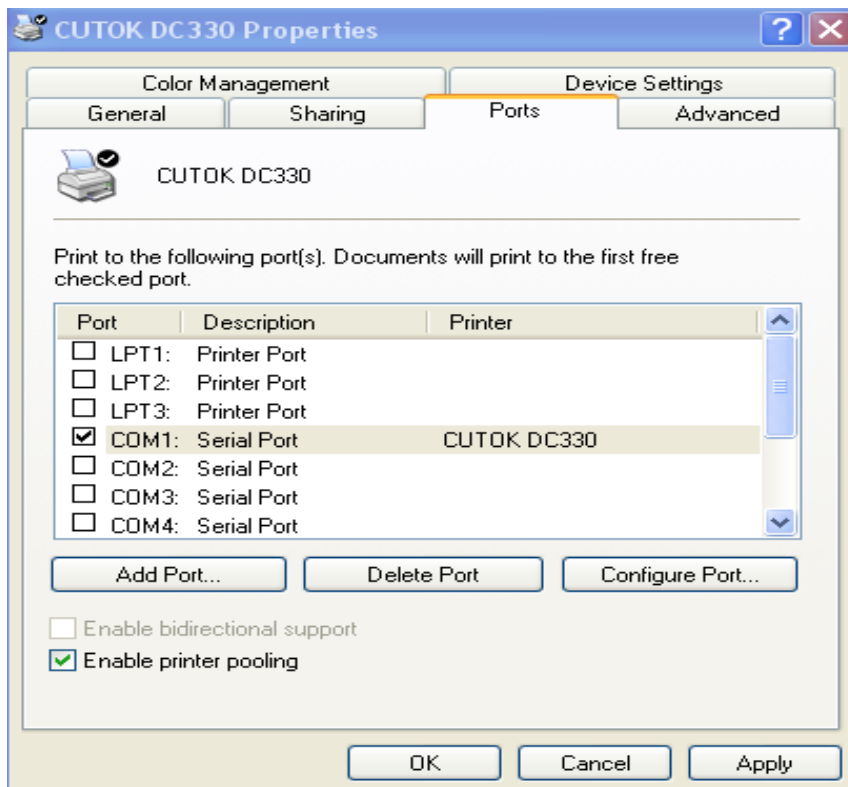
If using a USB port, turn on the computer first, and insert CD into the computer, then turn on the Mini cutter, this program runs by itself and finish installing driver. After installation, wait about 15 seconds the plotter will as a windows device automatically add to the printer item.









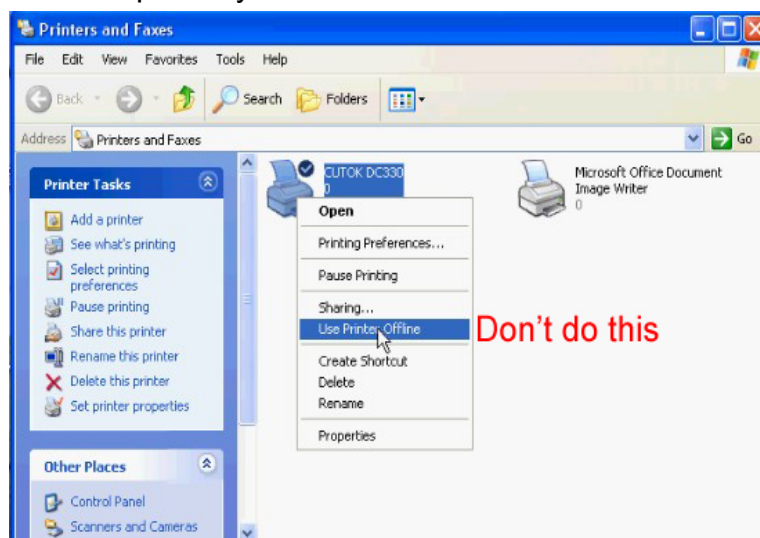


## Notes:

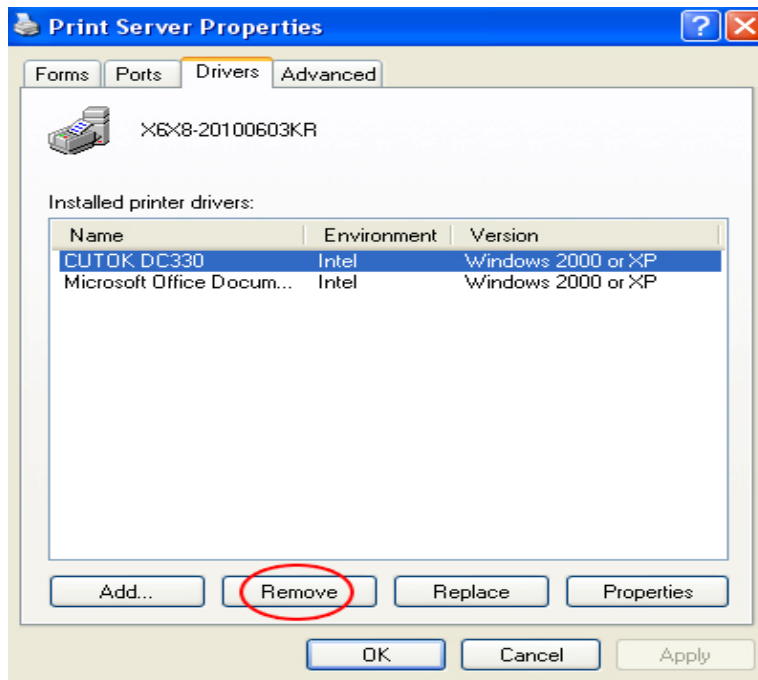
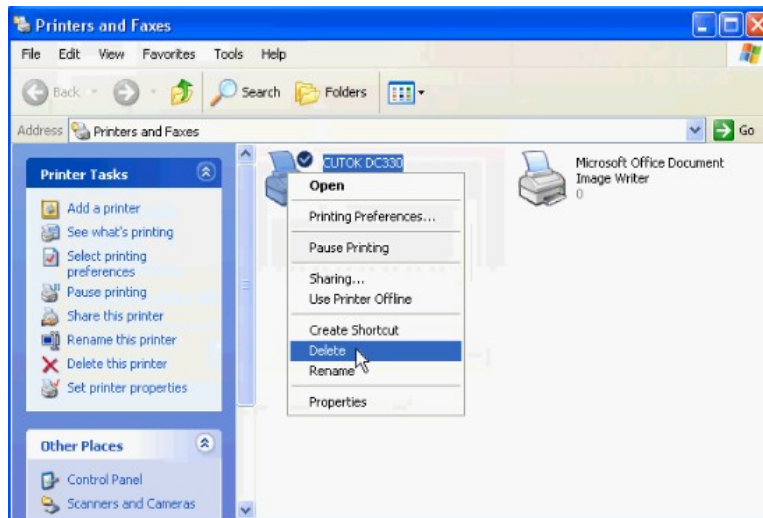
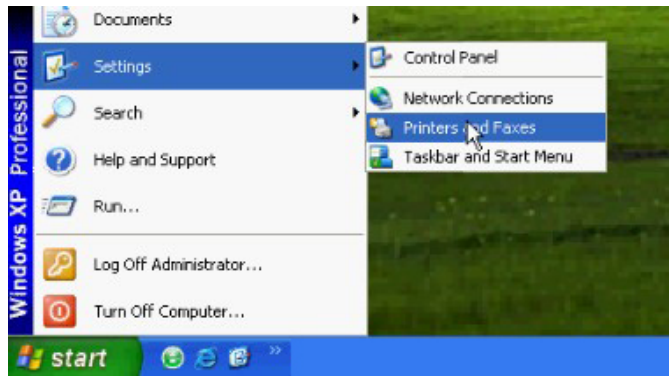
CUTOK DC330 with a "real" USB interface (not USB-serial and parallel), can achieve plug-and-pull, if pull (or shutdown) if the computer shows as offline, plug in (or start) the system automatically loads device and appears as online.




- Before turn on the plotter, start the computer firstly.
- In working, to avoid switching on or off frequently the cutting plotter, and a short interval between switch on and off (plug and pull).
- After turn on (plug) the plotter, wait 10 seconds, then send the data. You would better check the equipment is online before using. If offline, shut down or disconnect USB and start again later to automatically connect. Do not modify the properties in computer system.

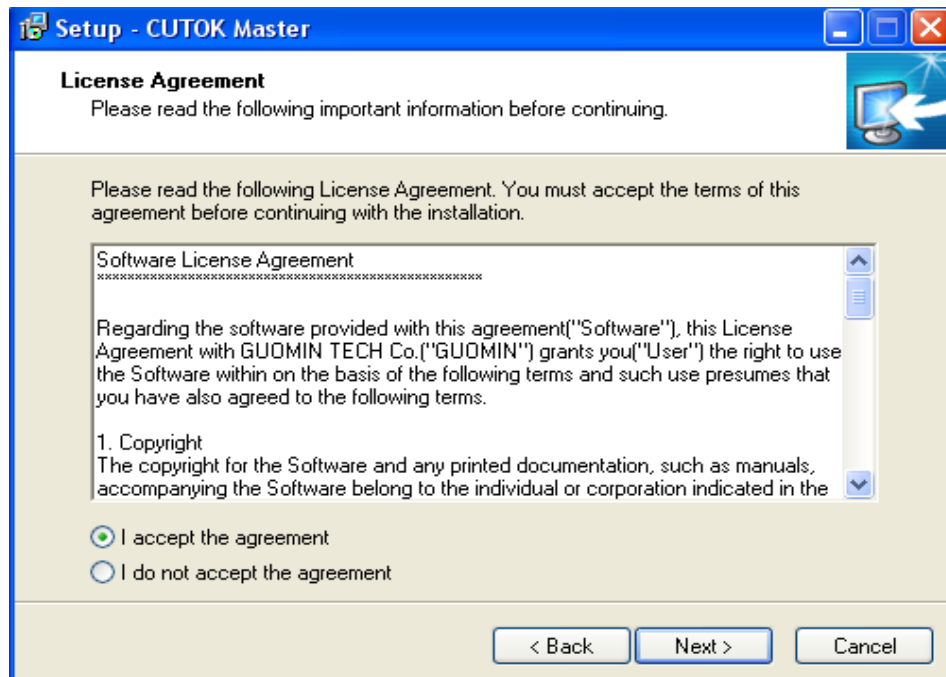


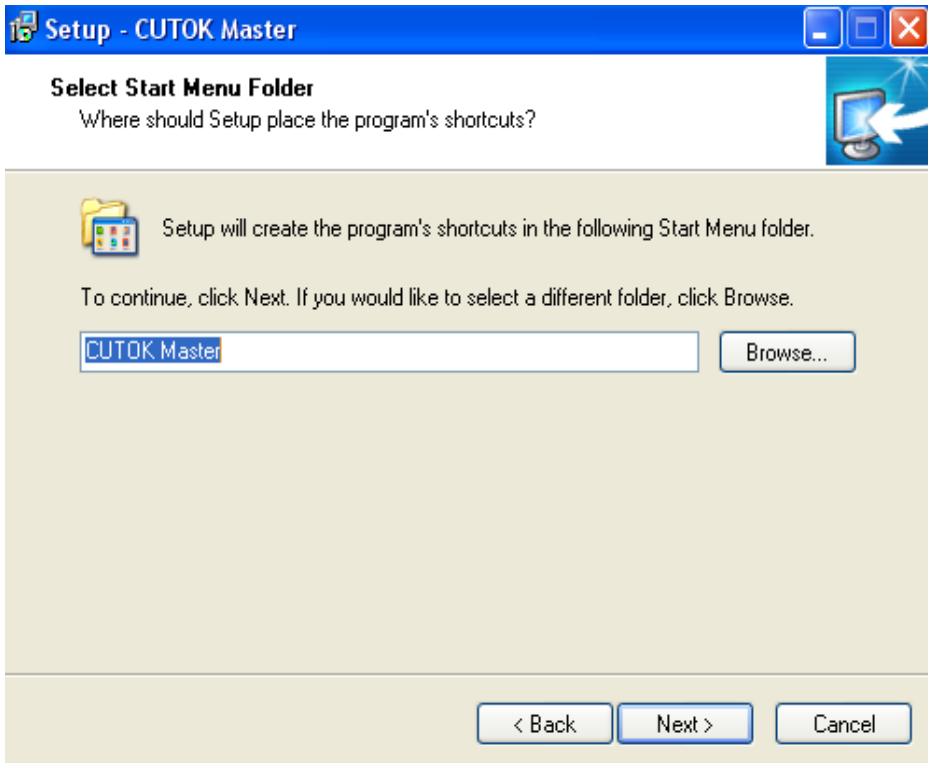
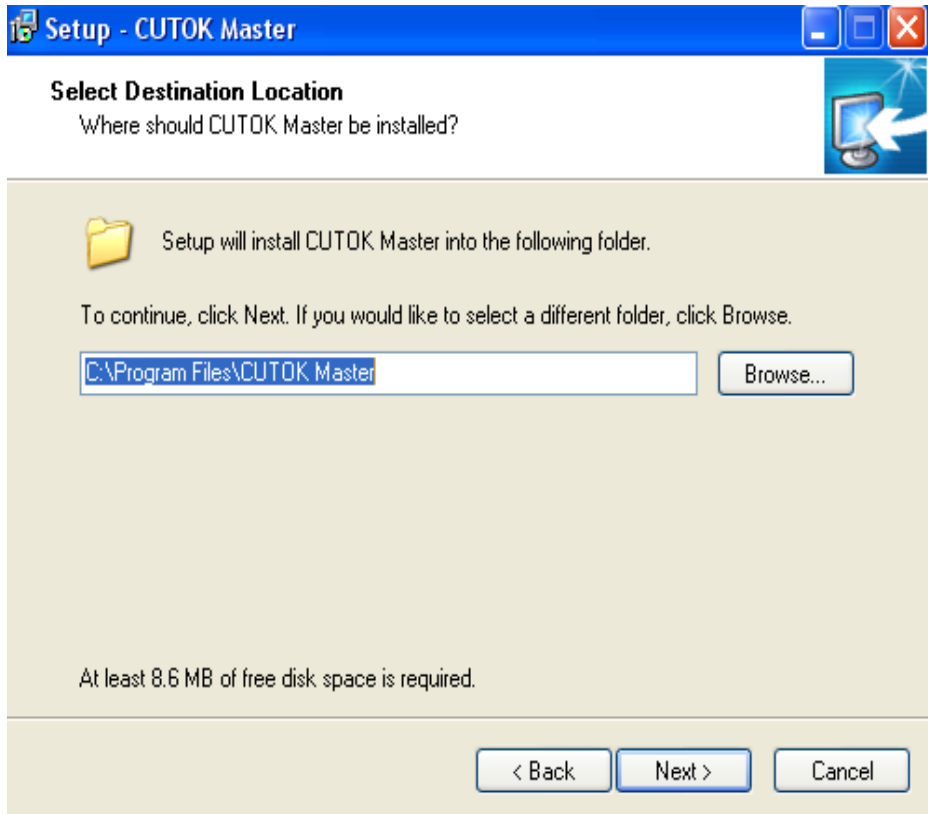
D. If it can not be online in using, you can delete the printer. Then insert CD to re-install automatically. If you want to completely remove CUTOK driver, you should follow these steps:

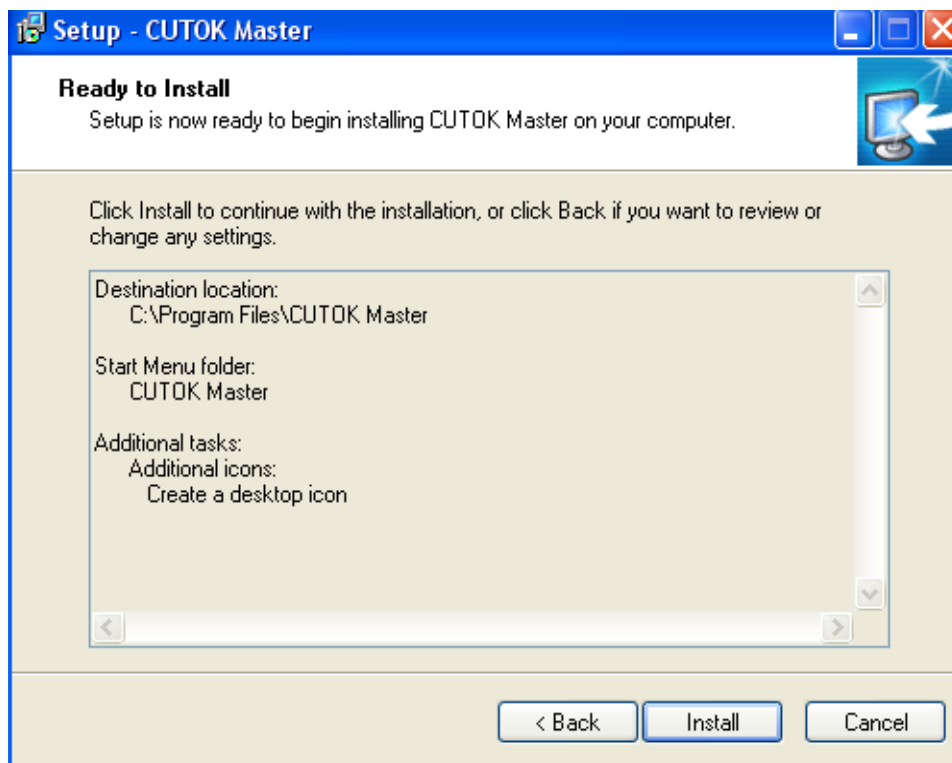
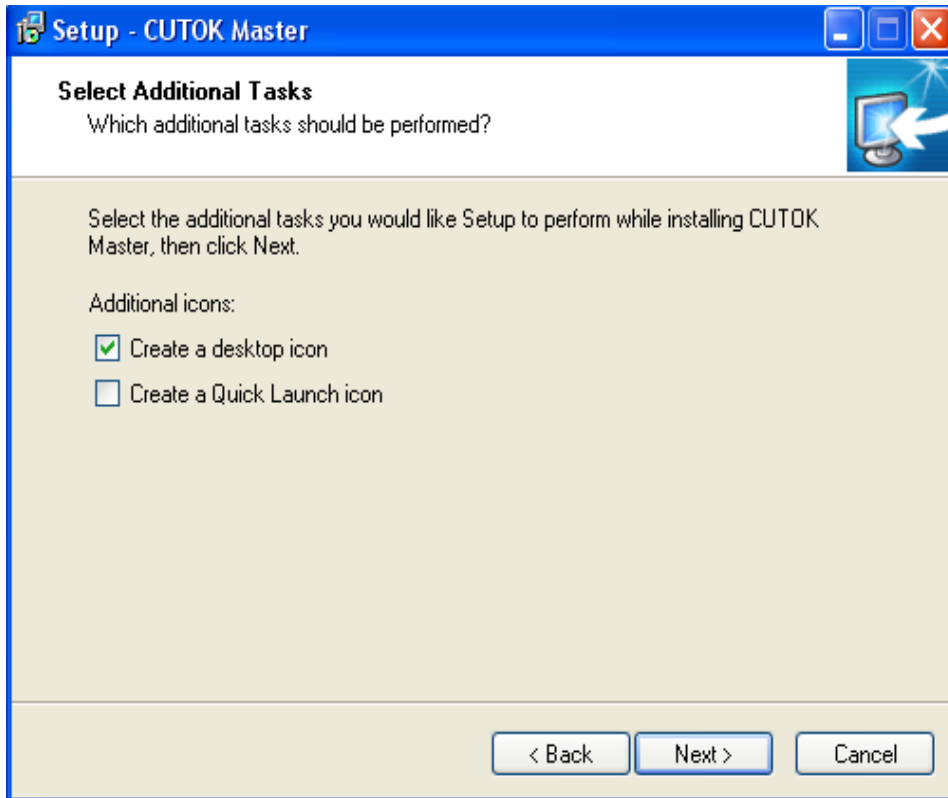


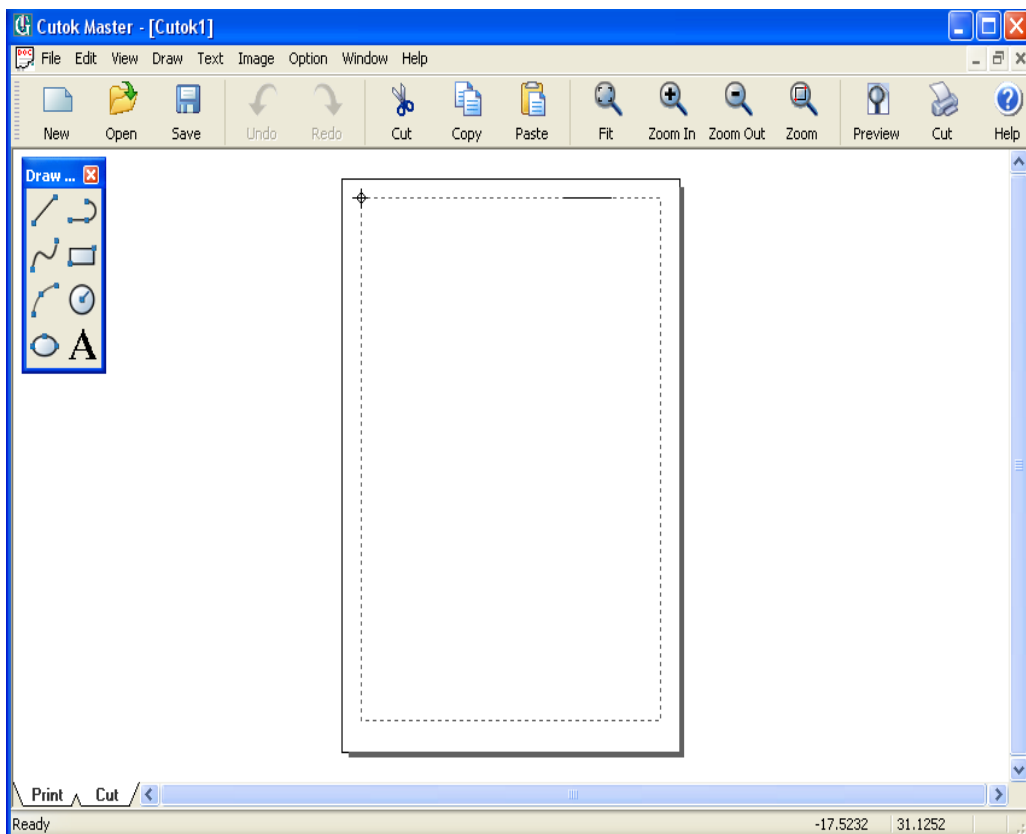
## Steps 2: Install CUTOK Master and use it

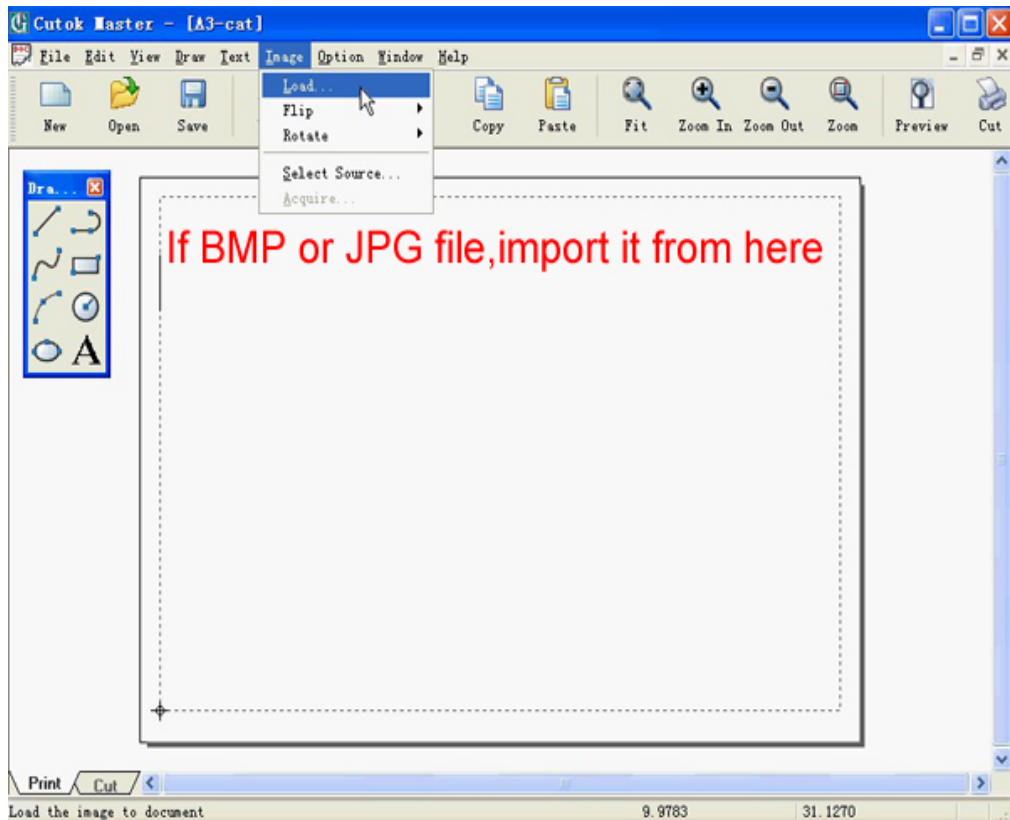
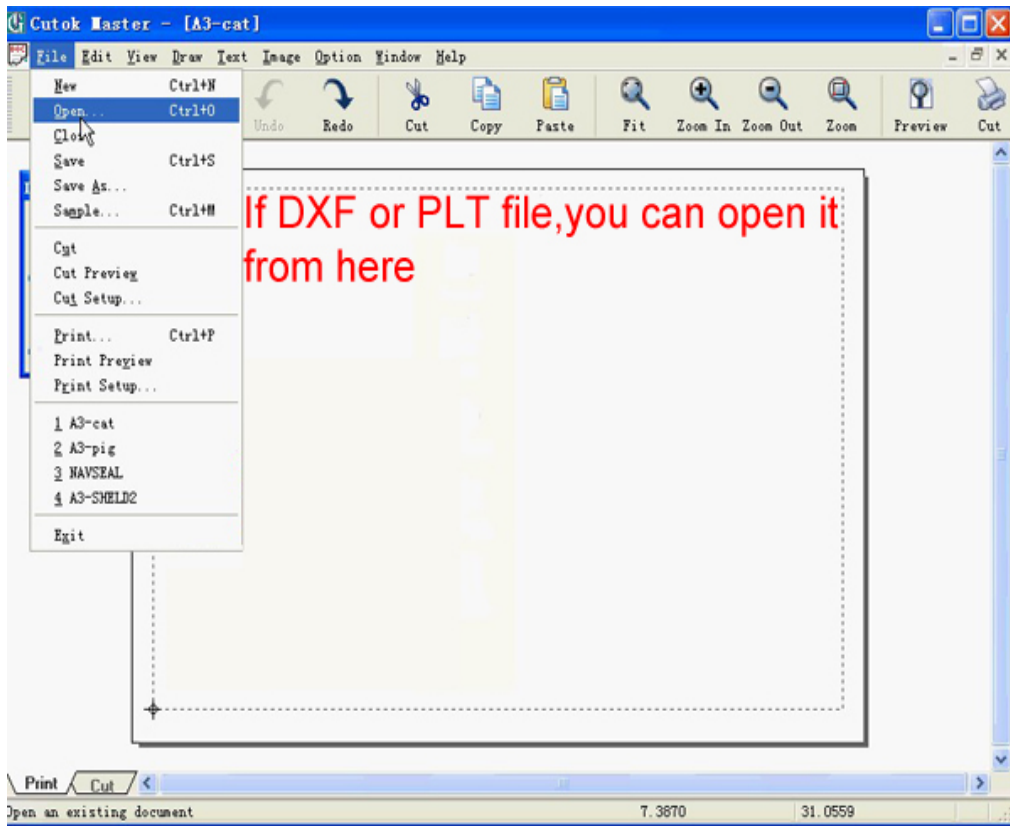
Click  in CD to install the software. You can also edit pictures in other software, such as CorelDraw, Adobe Illustrator, etc. then send the data to CUTOK plotter for cutting.



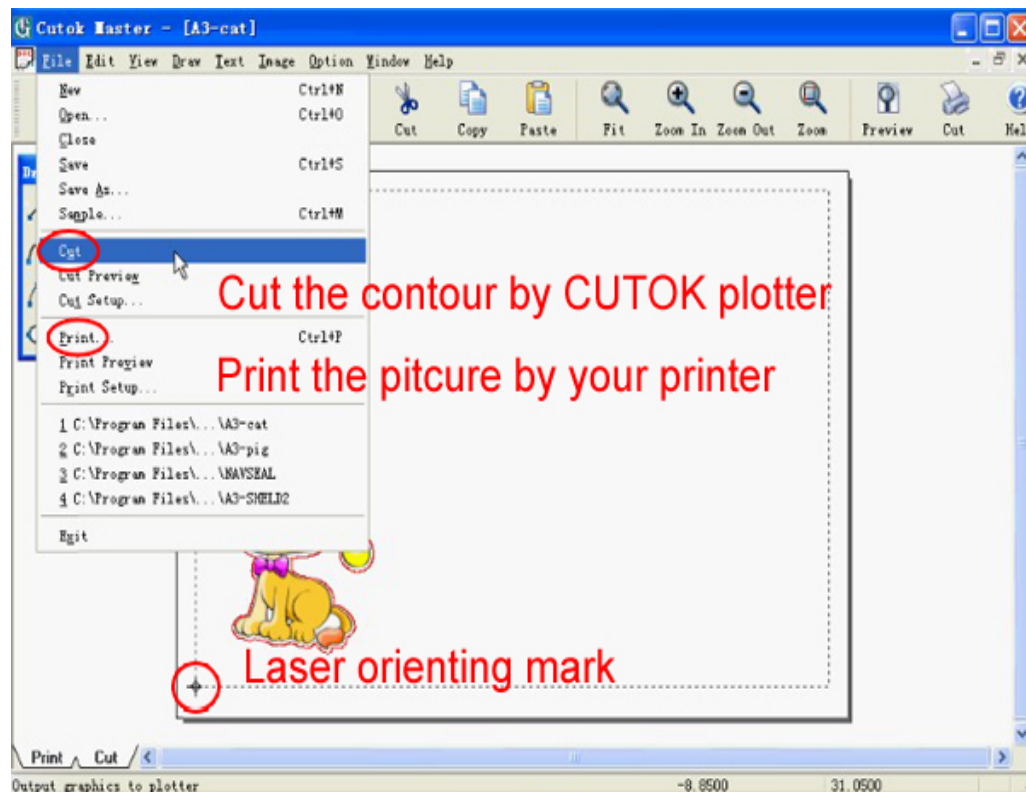
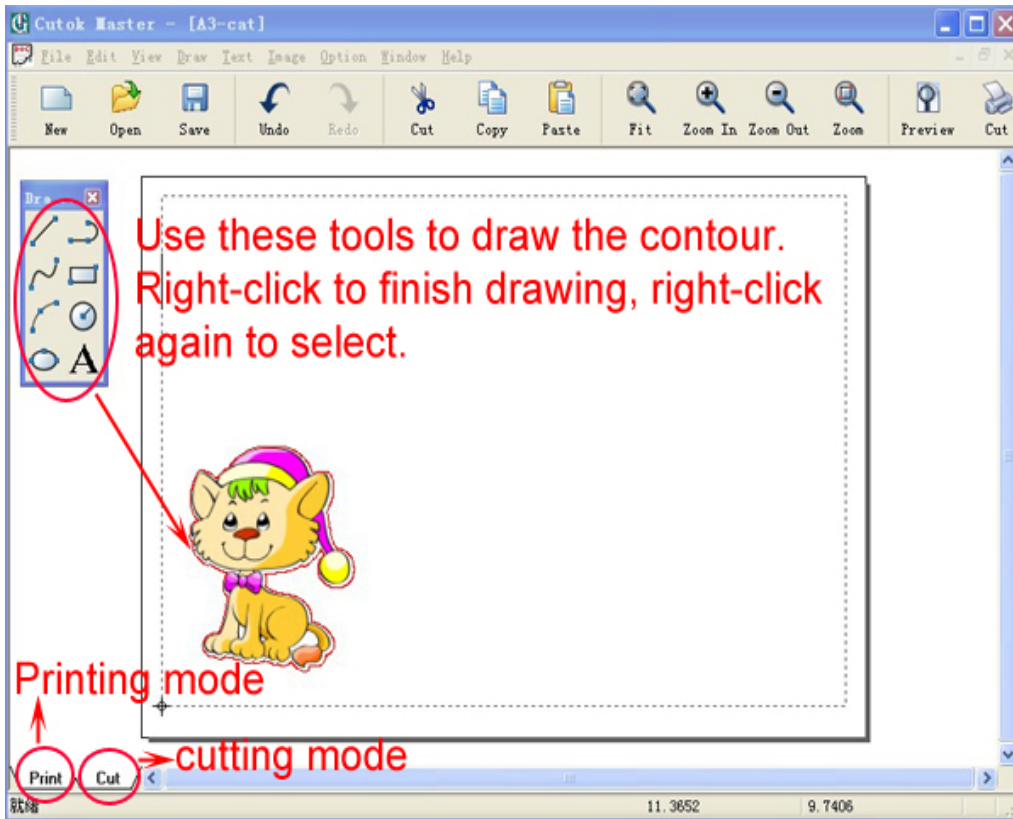















## **2.3 Connection to the power**

The indicator light will appear when press the . Then the carriage will move to right, the pressing wheel will turn (from front) forward and back one time. It shows that the cutter finishes restart automatically.

If the return is unsuccessful, please press the  button again.

## **2.4. Loading media**

You could use the vinyl in roll or just a piece of A4 /A3 paper.

Steps:

- ① Turn on the Power
- ② Push the handle down
- ③ Put the paper in from back of the cutter.
- ④ Keep the paper with the Checking Line on the same line!
- ⑤ Up the handle, then the pressing wheel will push go down on the paper.

## **2.5. Useable size of material available for DC-330/DC240 model:**

DC-330 model:

The material width is smaller than 330mm and bigger than 300mm.

The cutting width is smaller than 280 mm, length smaller than 2000mm.

DC-240 model:

The material width is smaller than 240mm and bigger than 210mm.

The cutting width is smaller than 190mm, length smaller than 2000mm.

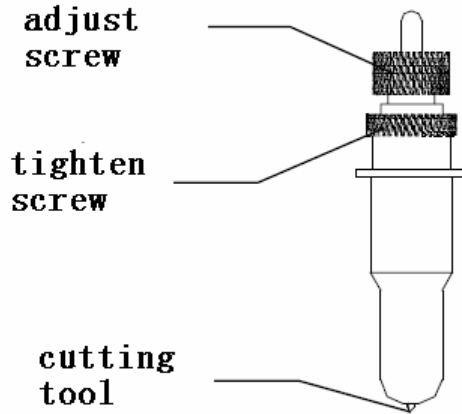
It's no limited minimum width if use the Cutting Mat.

## **2.6. How to use the cutting mat**

To avoid the paper moving during work, it's better to use the Cutting mat when cut normal paper. And the paper should be sticking on the mat. The paper size should be smaller than the Cutting mat.

## **Section 3 *Blade and Drawing pen***

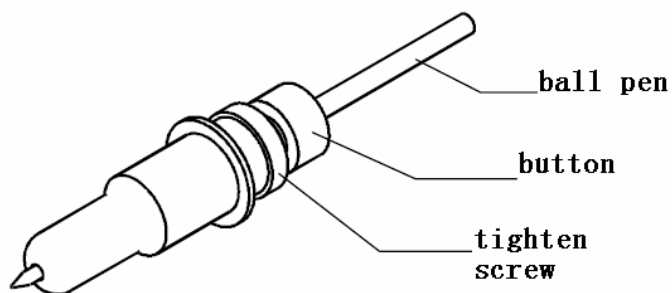
### **3.1. *Introduction of Blade holder***



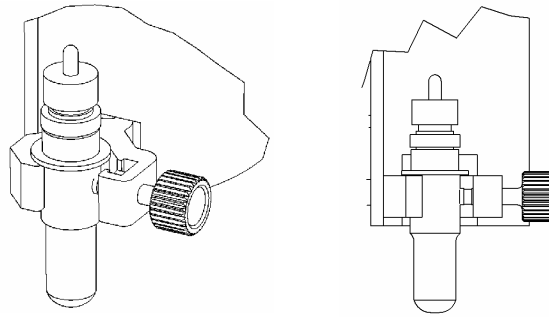
### **3.2. *How to fix and setup the blade***

- A. You should keep the blade clean and don't break the blade sharp.
- B. The length out of the cover should be just a little bit, about 0.2mm around over the paper thickness which you will cut !

### **3.3. *Drawing pen holder***

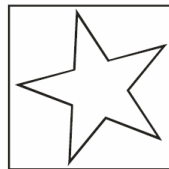


### 3.4. How to fix the blade holder or pen holder into the tool lamp





- ① Turn off the cutter.
- ② Loose the screw, fix the blade holder or pen holder, when the sharp of blade or the pen touch the Plastic Pressing strip, all is ok.
- ③ Tighten the screw in clockwise.
- ④ Turn on, you can see the sharp of blade or pen will rise up 2-3mm.

### 3.5. Testing



After fix blade (or Drawing pen ) and paper well, you can try to “Testing” to check the Force and the length of the blade ok or not

Steps:

- ①The STATUS LED will ON when Press .
- ②Press  button, the blade (or the pen) will draw the picture above for itself testing.

### 3.6 The life of Blade

The correct usage could prolong the life of blade.

- ① The more length the blade sharp extend out, the shorter life blade will work .  
So you should avoid cut through the paper.
- ② The more Force , the blade life will get short
- ③ Trying to use small Force, when the blade edge is getting less sharp, you could add the working force suitable.
- ④ Different brand blades will have different life.
- ⑤ You should change the blade when you find the old one has no tartness, to avoid affecting the work badly.

## Section 4 Working

### 4.1. Working state manner

The mini cutter has three Working state manners:

“Working”


“Pause”


“Orientation”


STATUS LED is OFF: You can receive the data. You could change the speed and Force during working.


STATUS LED is ON: The cutter on Pause state, so you can't receive the data.

When STATUS LED is ON

Press  the paper will move to back.

Press  the paper will move to front.

Press  to cut or draw testing picture.

Press  to Laser Orientation state. It will quit Orientation into Working

state when you keep  going press 5 seconds

### The “Working” state

When press  or  STATUS LED is OFF ,


The cutter will be in working state, it can receive data from computer, .


When the cutter re-starts, the setting in default is:

A .The Force at the smallest state.

B. Cutting speed= $\sqrt{4}$ , that's 98mm/s.

## 4.2. Change the speed


During Working or waiting computer sending data, you could press 

or  to change the speed.

The speed won't change when it arrive maximum or minimum.  
The mini cutter has 7 speed levels.

							mm/s
V1	V2	V3	V4	V5	V6	V7	
30	60	82	98	125	200	300	


## 4.3. Change the force






During Working or waiting computer sending data, you could  press

or  to change the Force.



The mini cutter has 7 speed levels. The Force won't change when it arrives maximum or minimum.

## 4.4. The "Pause" state

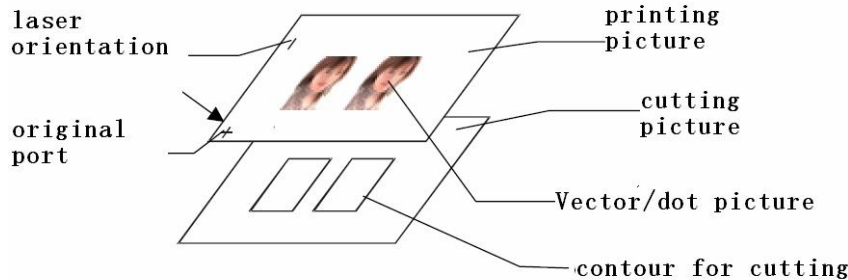
During Working state or at other states, it will be at Pause state when you press , the STATUS LED is ON ,and the cutter stop working. But it won't affect receiving the data, in the same time, you can:

- ① Press  or , to move the paper.
- ② Press  into Laser Orientation state.
- ③ Press  you could self testing.
- ④ Press  again, the STATUS LED is OFF, the cutter resume to work.



## 4.5. The “Orientation” state

The STATUS LED is ON, press  will at laser orientation state, and if you want to quit, just keep on press  in 3 seconds, then the mini cutter will be at working state.


## 4.6. Laser Orientation cutting and contour cutting



Take CorelDraw program as example:

- ① Please create more than two pictures layers in CorelDraw software, and make the picture and the orientation sign at a layer, make contour in another layer.
- ② Send the pictures and orientation sign layer to the printer for printing.
- ③ press  button, the STATUS LED will ON, then press  button,

now the cutter at Laser Orientation state. At this moment, the carriage will move from right to left, and will have a laser dot shoot out on the paper from right side to left, you need to move the paper by hand to check the original port

- ④ Put down the handle to press on the paper, press  button in 5 seconds in order to quit the orientation system, and get ready to receive the data from computer.
- ⑤ Close the printing attribute for the image and sign in the CorelDraw software, Send the vector contour layer to the mini cutter for cutting

Note:

1. The width of the curve must be very slim. (Even 1pt still can't be output)
2. You must change the letter into curve when you want to cut letters, and make sure the curve is slim enough!
3. Different cutters will have different orientation sign, so it needs to adjust.
4. CorelDraw is not special cutting software, have no sharp compensate function, so maybe (there will ) not work well at the ling corner and the seal.

## Section 5 Specifications

Item	CUTOK DC 240	CUTOK DC330
Configuration	Grit-rolling	
Drive system	Stepping moter	
Maximum cutting range	190X2000mm	290X2000mm
Effective sheet width	A4 size supported 8.25 inch	A3 size supported 11.75 inch
Cutting force	60g to 500g (7 levels selectable)	
Cutting speed	10 - 280 mm/s ( 7 levels selectable)	
No. of pens mountable	One	
Media types	Film media 0.1 mm or less in thickness Kent paper (inkjet or laser paper up to 300g/m2) Drawing paper, Postcards, Scrapbooking paper, Inkjet photo paper (Not all types of media can be cut)	
Software resolution	0.0254mm/step 1000DPI	
Motor	Stepper	
Interface	USB 2.0	
Language	DM/PL HP/GL	
Power supply	Dedicated adapter OUTPUT:DC 16V 2.5A INPUT:AC100V 240V 47Hz 66Hz	
Working Temperature	5 to 30 °C	
Relative humidity	35% to 80% (Non-condensing)	
External dimensions (W x D x H)	Approx 380 x 170 x 165mm (15" x 6.7"x6.5")	Approx 470 x 170 x 165mm (18.5"x 6.7"x 6.5")
Carton dimensions (W x D x H)	Approx 470 x 360 x 270mm (18.5" x 14.2"x10.6")	Approx 590 x 360 x 270mm (23.2"x 14.2"x 10.6")
Net Weight	Approx. 4.5kg (9.9Lb)	Approx. 5.5 kg (12.1Lb)
Gross weight	Approx. 5.4kg (11.9Lb)	Approx. 6.7kg (14.8Lb)