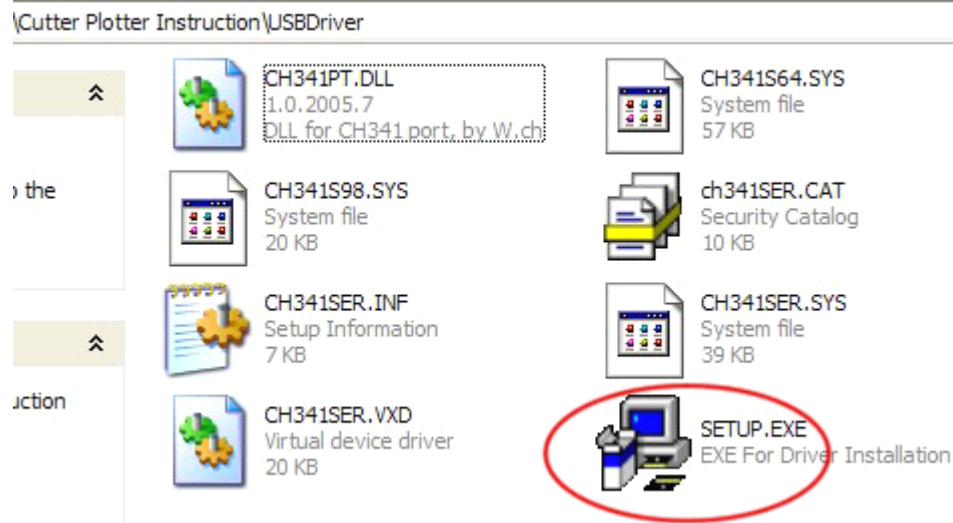


HOW TO INSTALL ARTCUT

www.asc365.com

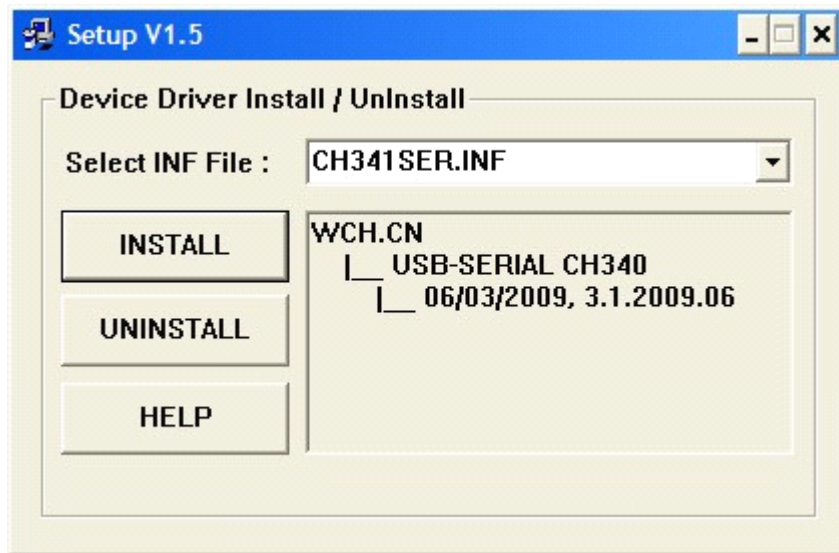
When you connect the plotter and computer by USB cable, Please firstly install the USB driver as bellow:

1. Turn on cutter/plotter, connect computer and plotter by USB Cable. Double click "SETUP.EXE".



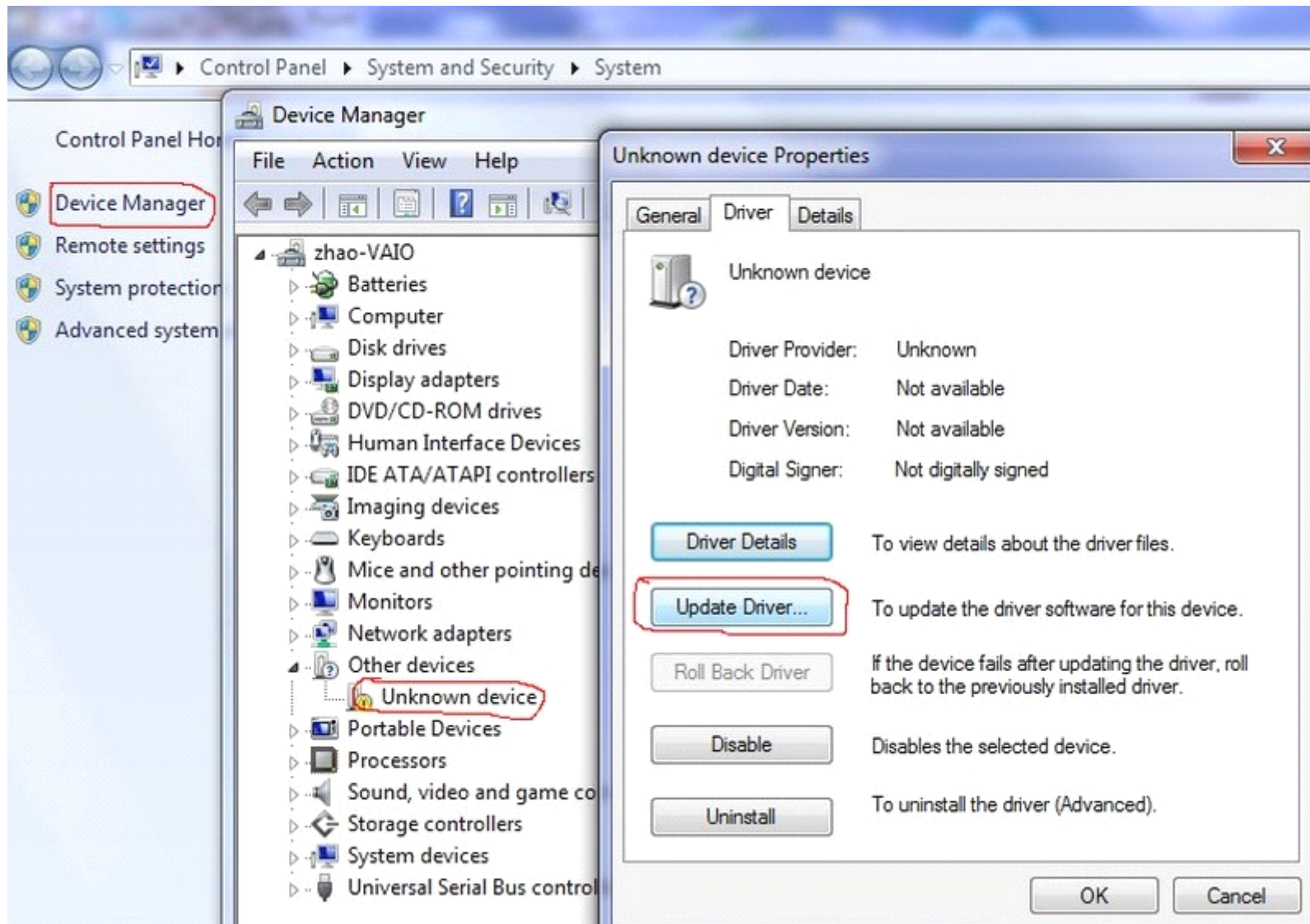
2. Click the "**INSTALL**"

When finished installation, click "**OK**".

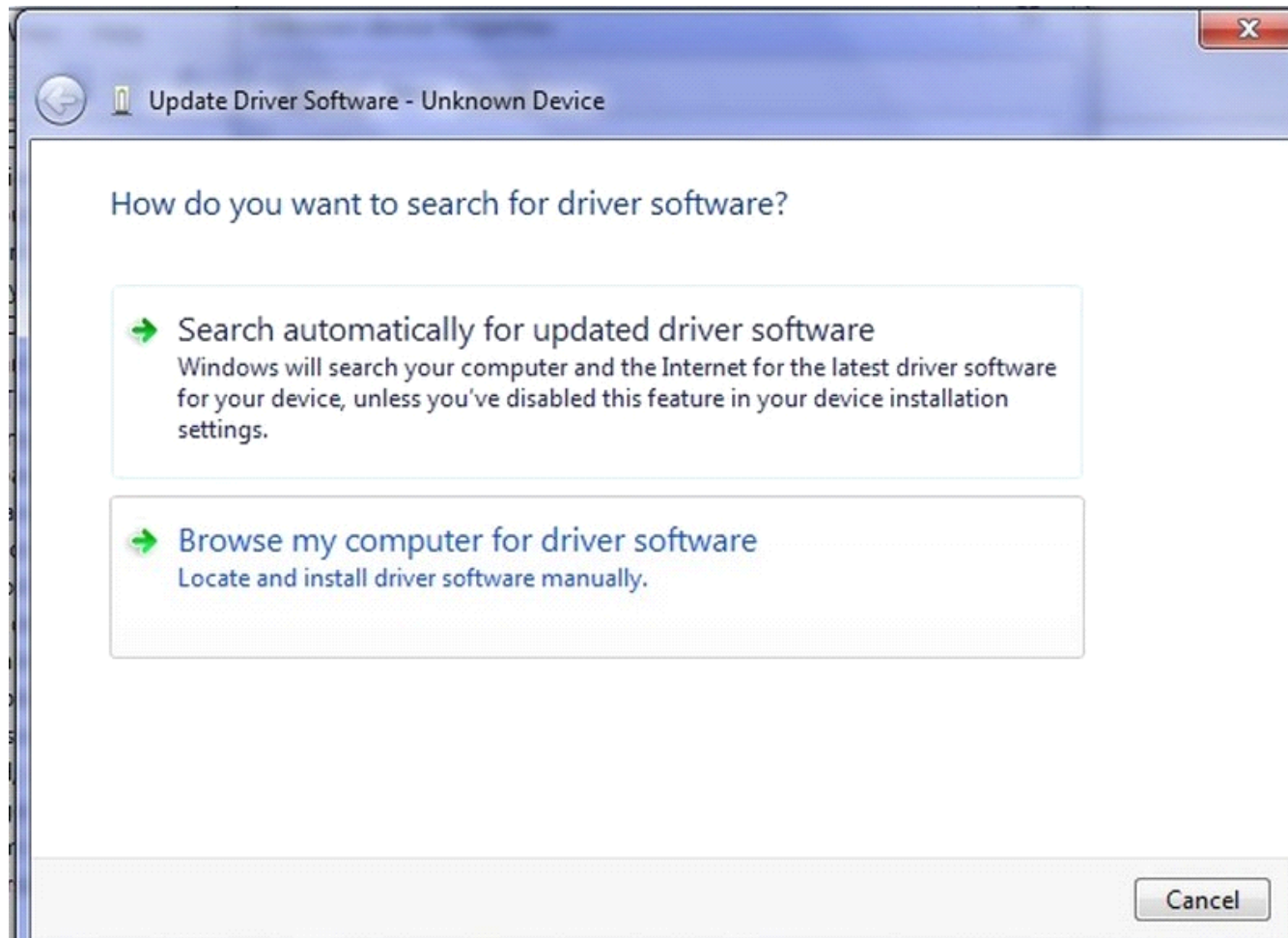


If your computer system is VISTA or WIN7, can not install the USB driver, please refer to the below:

1. Right click "**My computer**" > "**properties**" > "**Device Manager** "
you can find "**Unknown device**", double click it, pop up a window
then click "**Update Driver**"

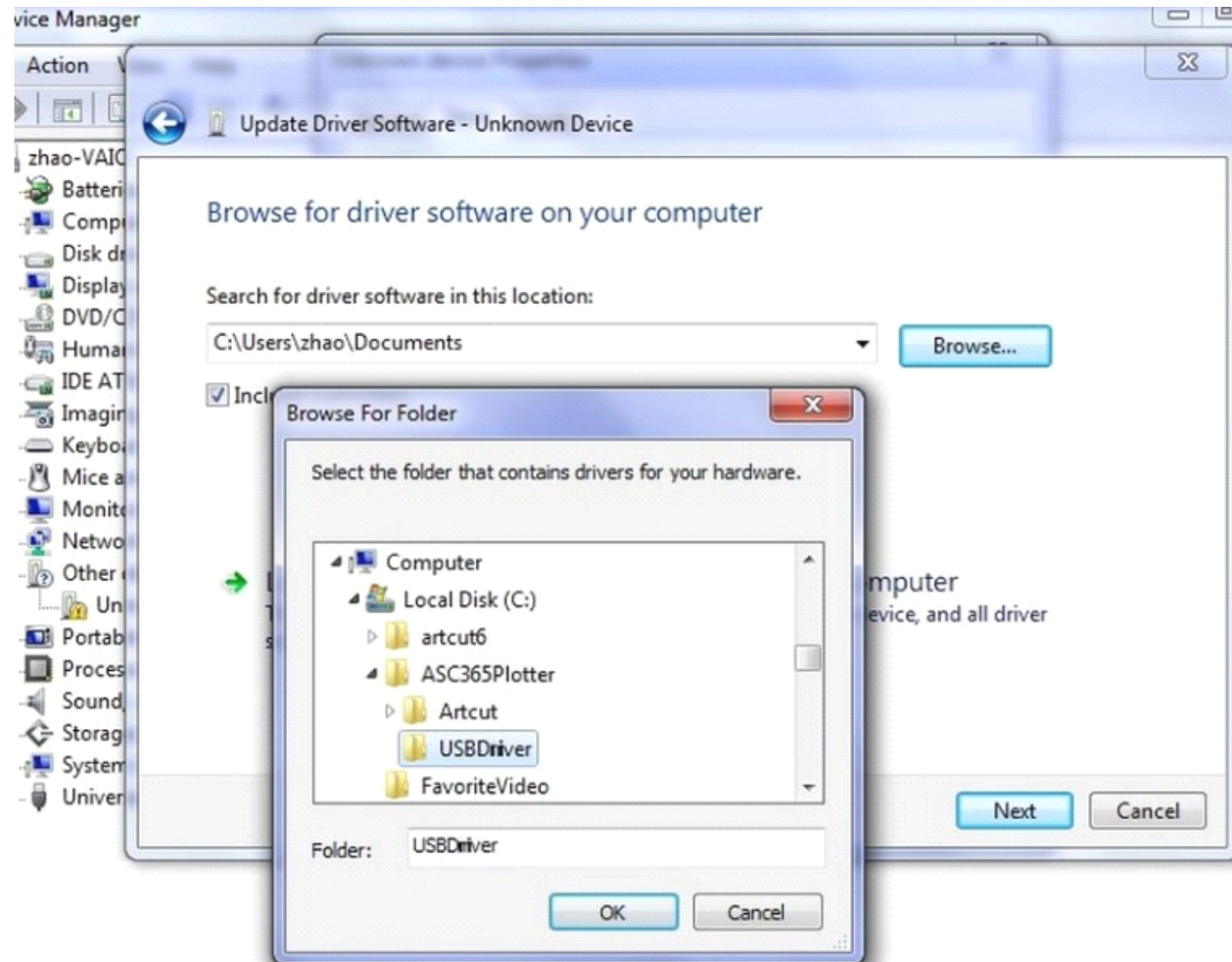


2. Click " **Browse my computer for driver software**"

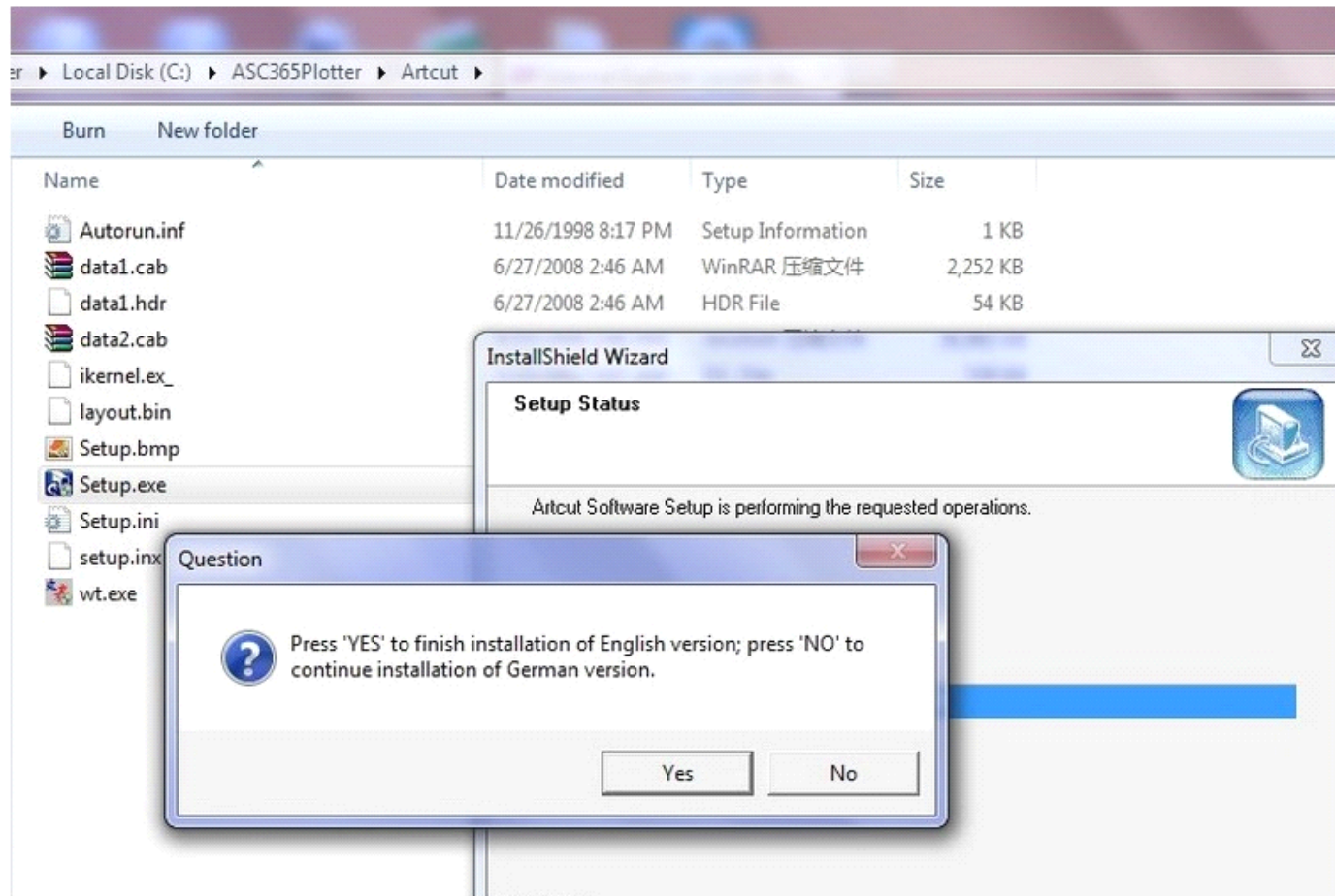


3. Click "Browse"

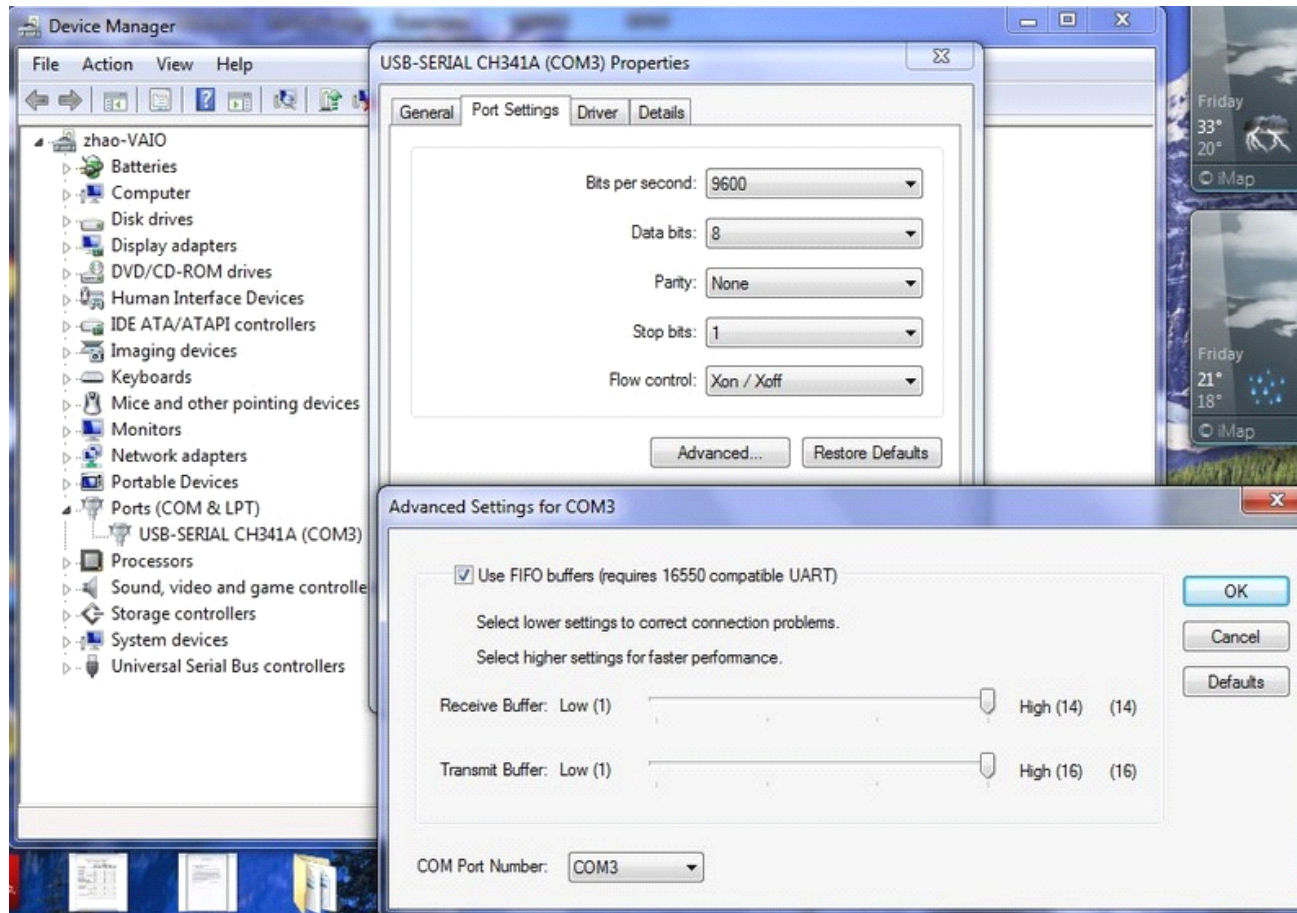
Select "**C:/USBDriver/**" **Note:** that is according to which folder the **plotter** driver stored in.



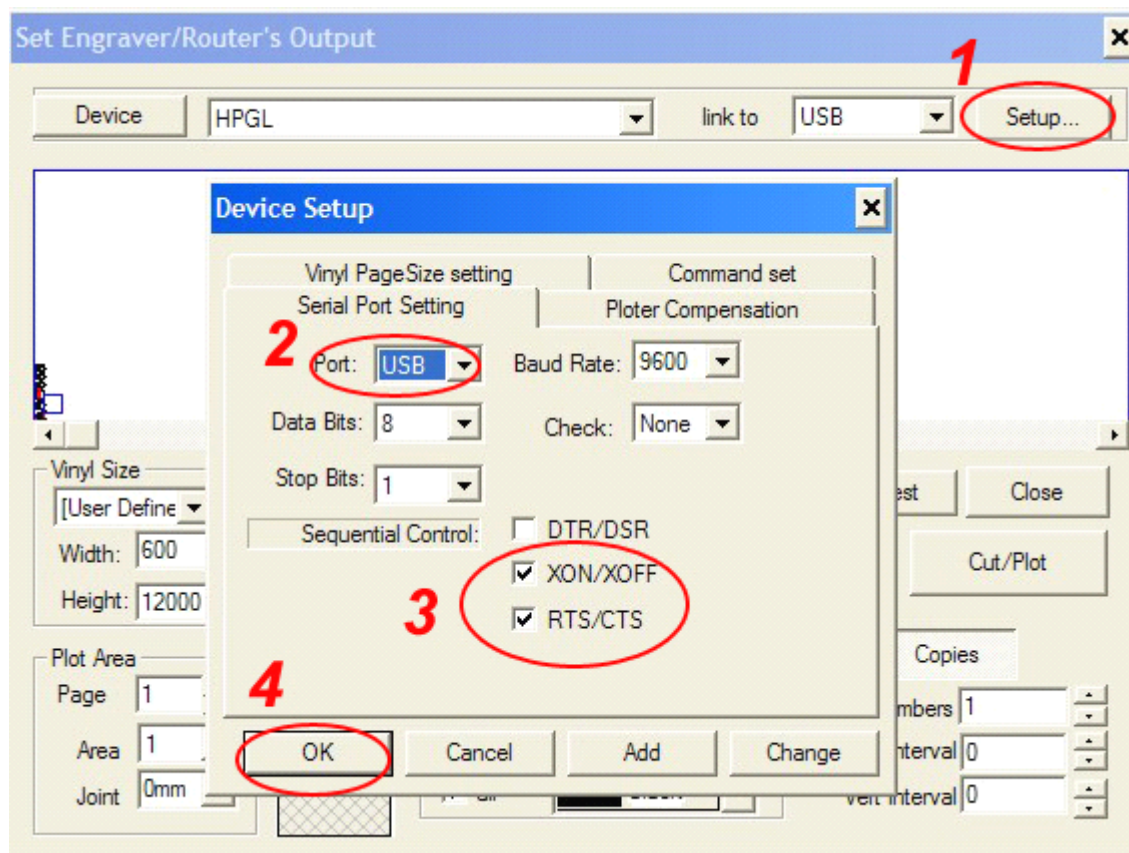
4. After update the Driver, then Double click "**SETUP.EXE**" to finish installing the USB driver.



5. USB driver installed ready, the port should show "USB-SERIAL CH341A(COM3)"
Click port, "**Port Setting**"
Select "**Flow control**" as "**Xon/Xoff**"; set "**flow control**" as "**9600**".

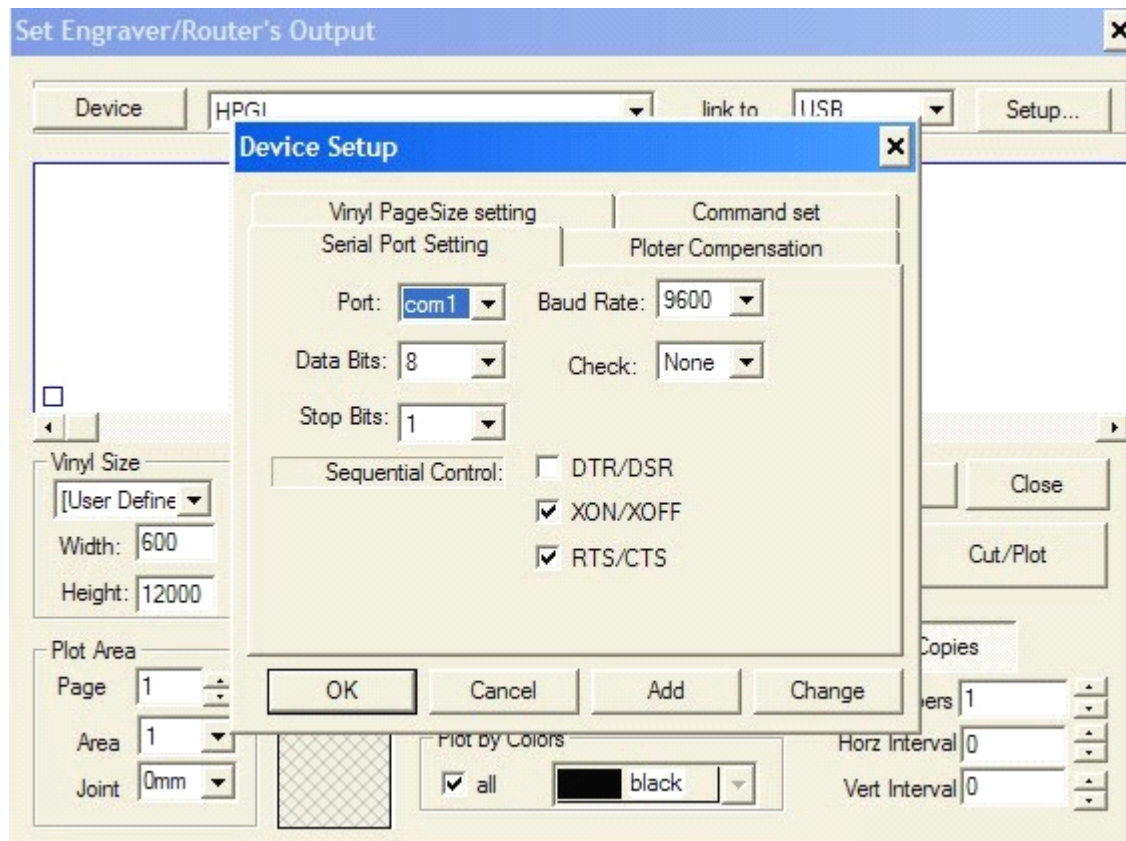


6. In the Artcut, On the "set engraver/routers output" screen in "device set up" under "serial port setting", please select "XON/XOFF" and "RTS/CTS".

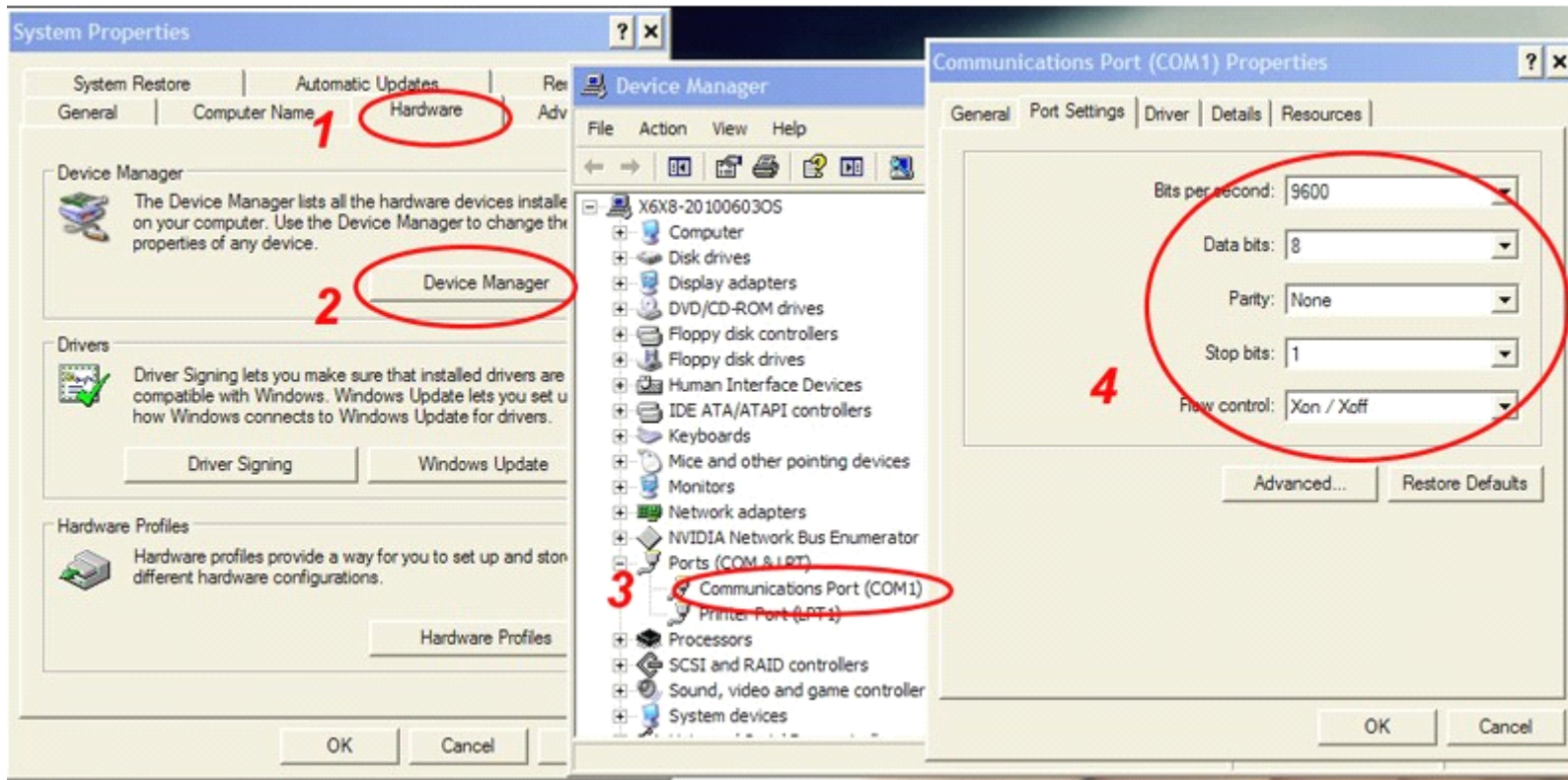


If by COM cable, please set it according the below:

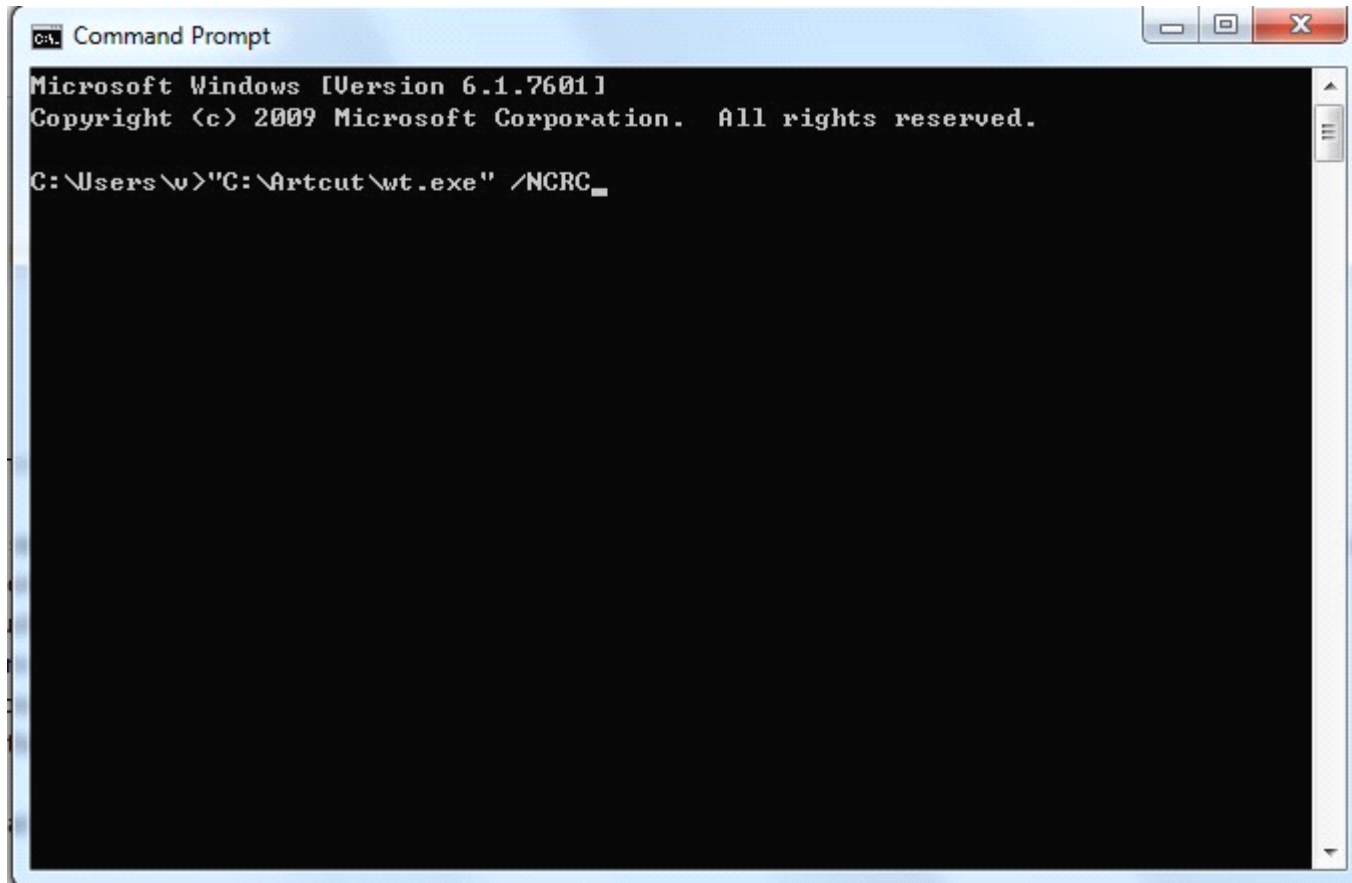
1. On the "set engraver/routers output" screen in "device set up" under "serial port setting", please select "XON/XOFF" and "RTS/CTS".



2. In "device manager" under "communications port (com1) properties" in "port setting" tab, please set "flow control" as "9600".



Save the ARTCUT and USB driver on your DESKTOP, If you can not open the Artcut after installing, Please go to "**Command Prompt**", input "C:\Artcut\wt.exe" /NCRC , then press "enter", appear a window of antivirus software, please select to allow operating.



```
Command Prompt
Microsoft Windows [Version 6.1.7601]
Copyright (c) 2009 Microsoft Corporation. All rights reserved.

C:\Users\w>"C:\Artcut\wt.exe" /NCRC_
```