

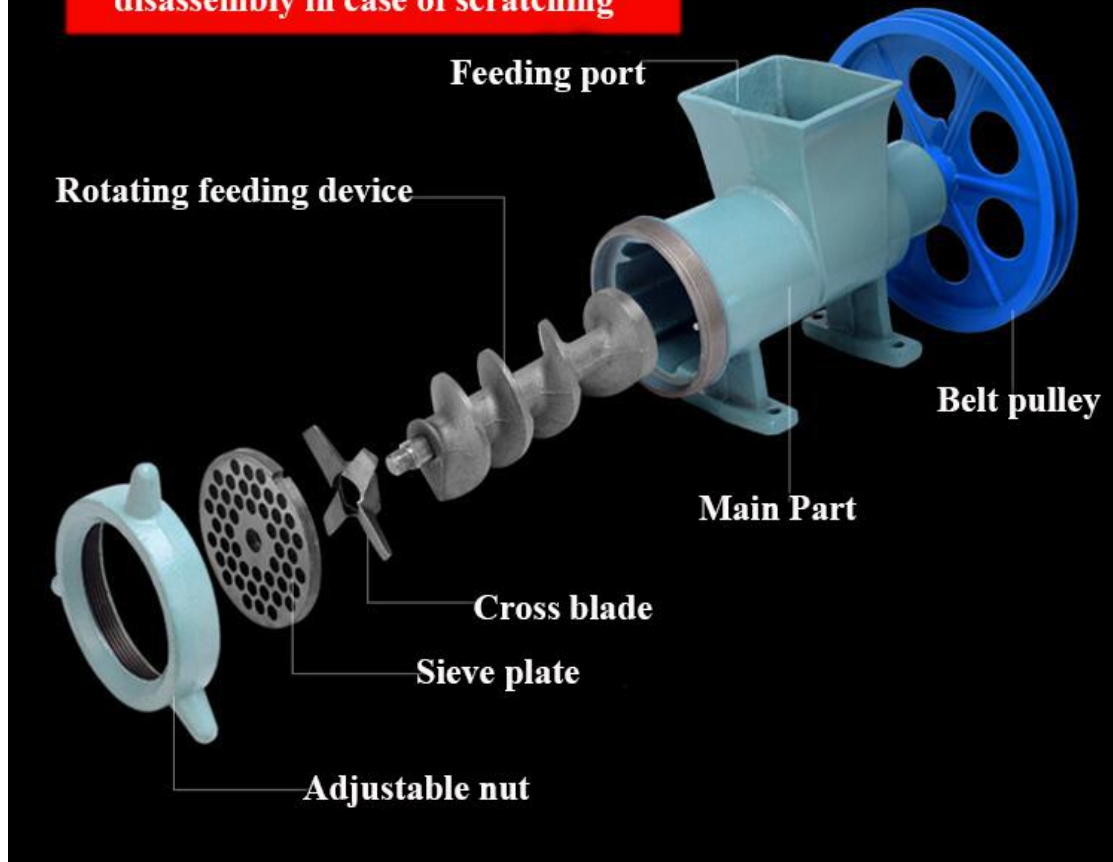
# *Instruction manual*



## *1. The Introduction of Parts*



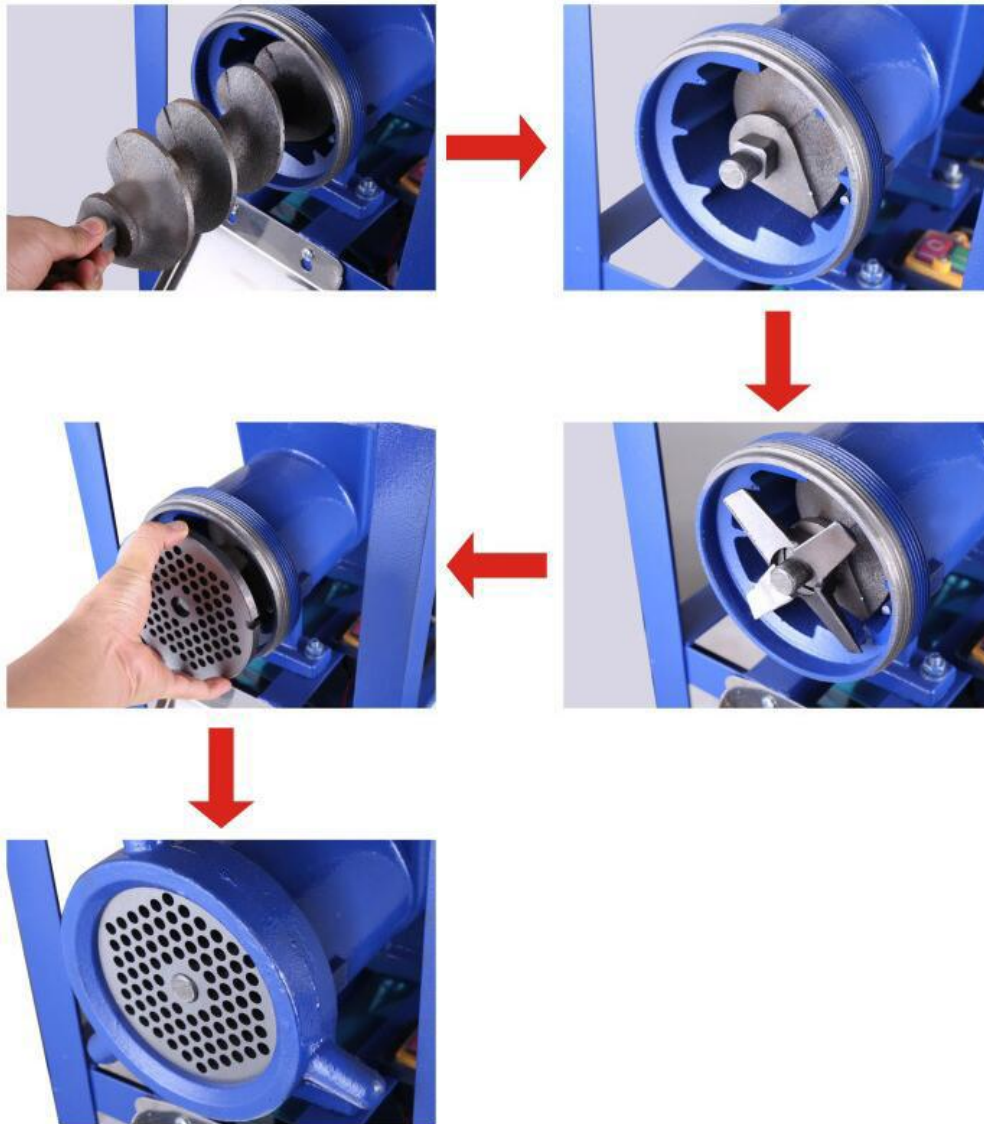
**Pay attention to the blade during  
disassembly in case of scratching**



**Do not put your hands into the  
feeding port when the machine  
is operating! If necessary, please  
use a wooden stick instead.**



## ***2. Installation and Disassembly***



2.1 Before the installation or disassembly of machine, please switch off the machine first.

2.2 The steps of installation is as the picture, If disassemble, follow the opposite steps.

2.3 About cleaning, please use hot water and dishwashing liquid to clean these parts. And then use the soft cloth to dry it. After that, smear edible oil on the parts.

### ***3. Instructions for Use and Precaution***

3.1. Before use, please clean the anti-rust oil on the parts.

When the meat is pushed into the machine, it will be crushed into strips and the bones and gristle will be removed from the strips.

3.2. When using the machine to crush meat. The adjustable nut should be in reasonably tight in order to pour the material out the sieve plate.

3.3. After the machine is operating well, the material can be put into the feeding port (frozen meat must be thawed first), and if necessary, please use a home-made wooden stick to push the material into the main part.

3.4 After use, please disassemble the parts and clean them as the page 3, and then smear the edible oil on parts.

3.5 Do not make the machine operate with no material in it more than 1 minute, otherwise the blade will be damaged.

## ***4. Warnings***

4.1 It is forbidden to put your hand into the feeding port and the discharging port when the machine is working.

4.2 Do not let the children near the machine.

4.3 Minors are forbidden to operate this machine. This must be strictly obey.

4.4 Before using, please connect the ground wire first, then connect to the power supply. Leakage switches and circuit breakers should be installed on the power line

4.5 Do not screw the adjustable nut laxly or tightly when the machine is operating.