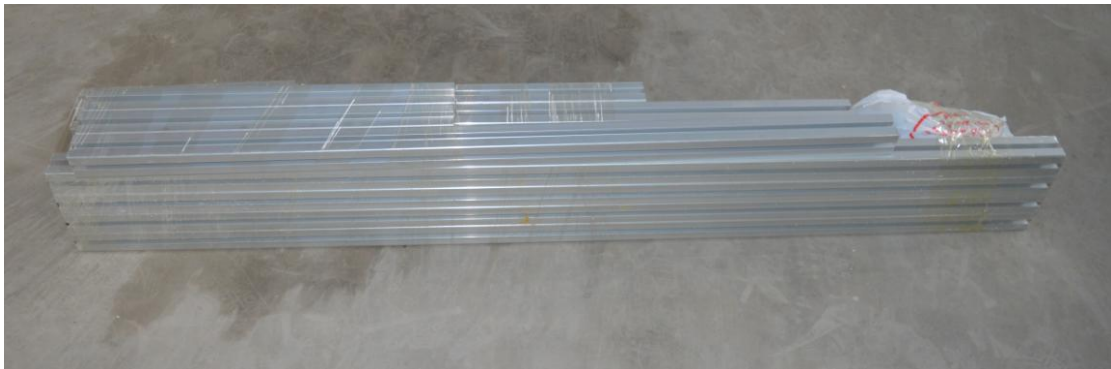


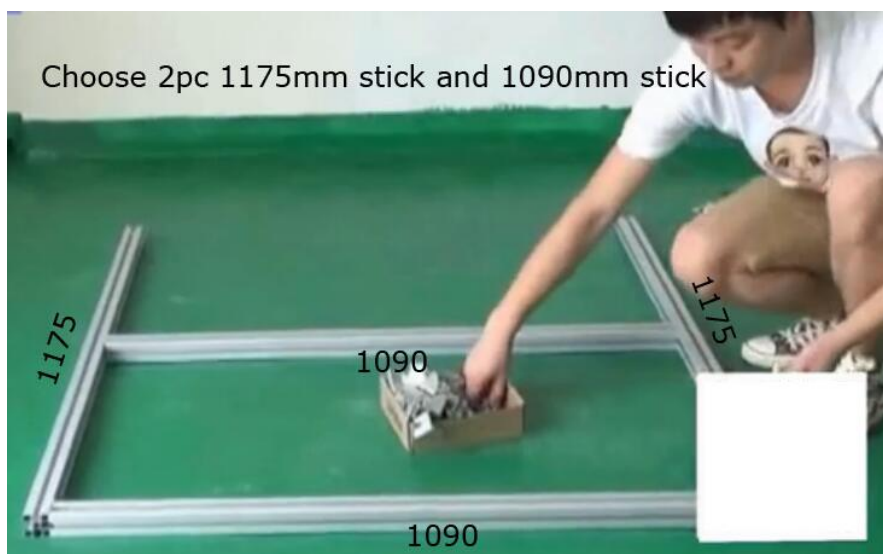
Dust Free Room Installation

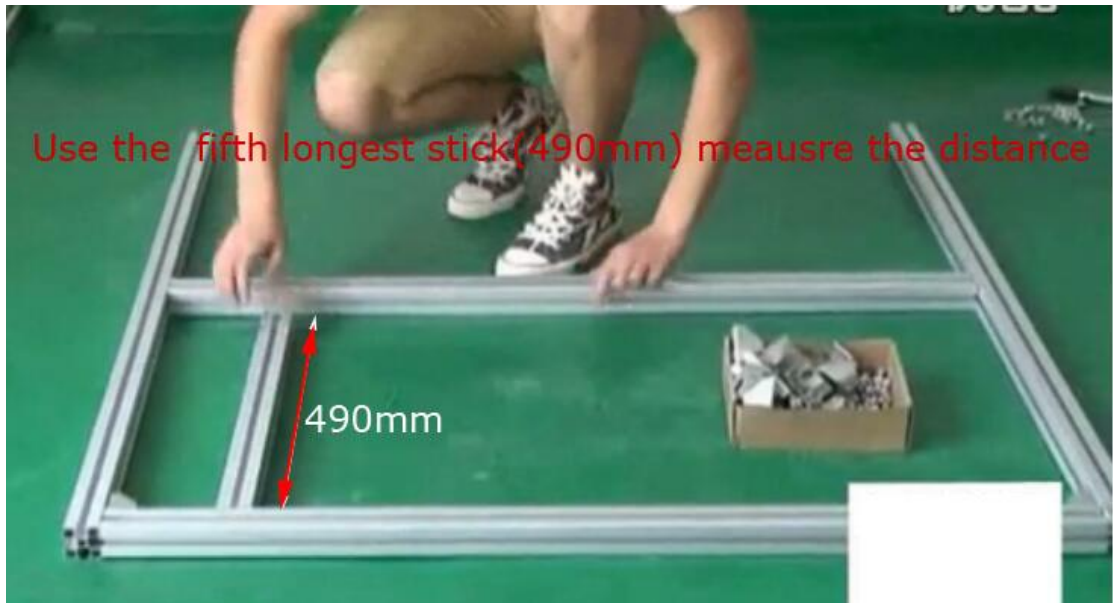


The length of the Frame are different.

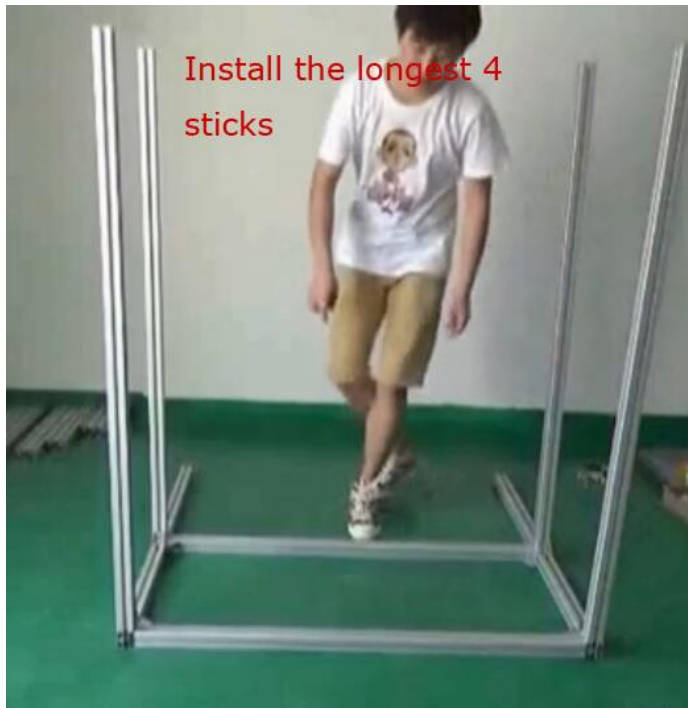
- | | | |
|---|----------------|-------------|
| 1) The longest stick | length: 1400mm | quantity: 4 |
| 2) Then the second longest stick | Length: 1175mm | quantity: 2 |
| 3) Then the third longest stick | Length: 1090mm | quantity: 6 |
| 4) Then the fourth longest stick | Length: 600mm | quantity: 2 |
| 5) Then the fifth longest stick | Length: 490mm | quantity: 2 |
| 6) The shortest stick | Length: 250mm | quantity: 4 |

Step 1.





Step 2



Step 3

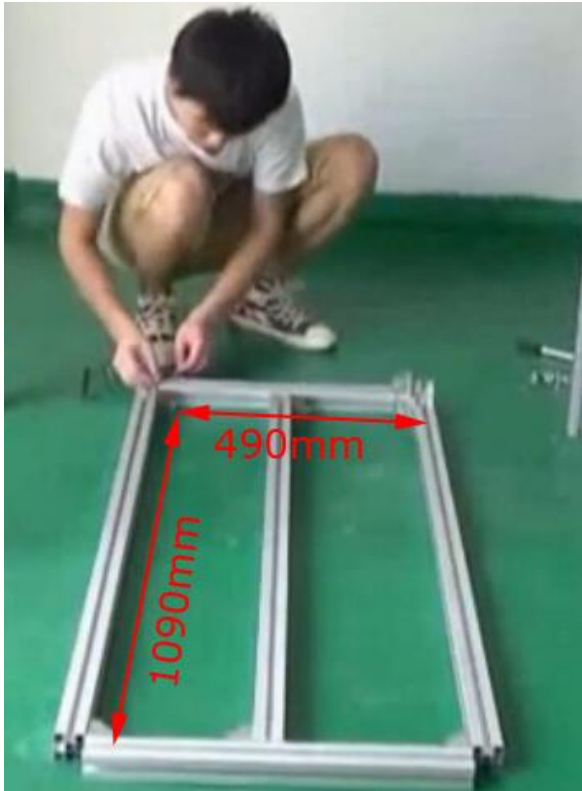
Then turn it upside down



Step 4:

Choose 3pc 1090mm(the **third longest** stick)

2pc 490mm(the **fifth longest** stick)



Step 5

Use ruler measure 750mm then install the step 4's work

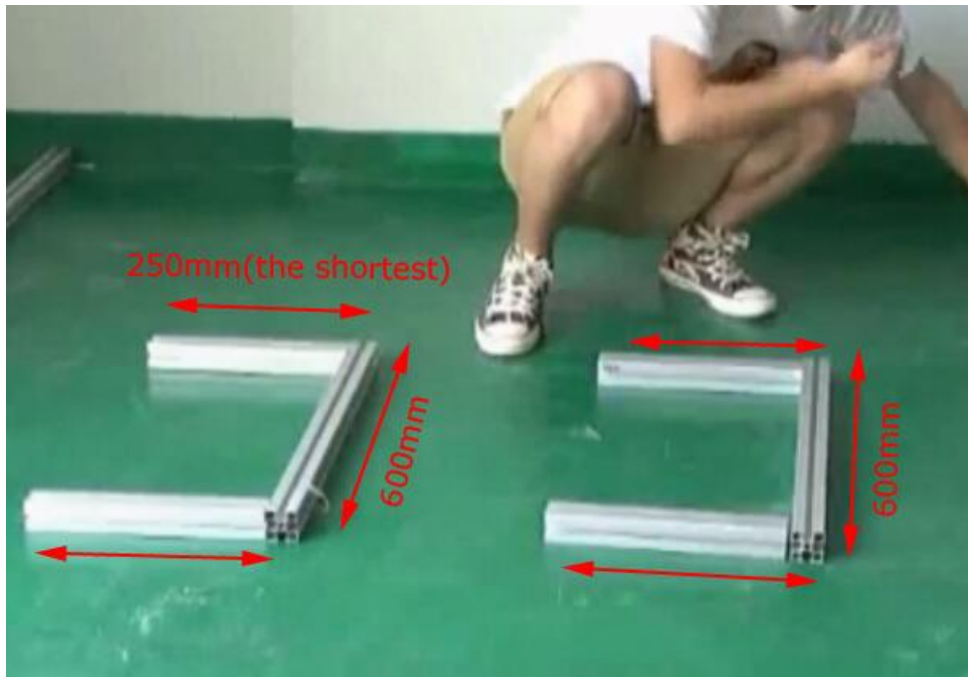


Step 6

Choose 4pcs 250mm(the shortest one)

2pcs 600mm(the **fourth longest** stick)

Install them as the following pic shows



Step 7 Install them this way



Step 8

Install the last 1090mm stick (the **third longest** stick)



Step 9

Loose the nut of this place in order to install the workbench



Step 10

Install the workbench tighten the screw



Step 11

Install the filter and fan



Step 12

The last step is to install the cover.(use tape to stick)

Have any other installation problem, please feel free to contact us.