

# HEAT PRESS ST-210

## EN Start Here

## TC 入門指南

### Mini double-station MUG press 迷你雙功位烤杯機

 warnings must be followed carefully to avoid bodily injury.  
必須嚴格遵守警告事項以免身體受損。



## Unpacking 拆裝

Contents may vary by location  
內容可能因為地區而有所不同

Please remove the packing foam carefully and keep well for maintenance.  
請小心移除設備外包裝泡沫。並保存好該包裝材料，以備保維修時使用。

# 1



警告  
caution

1. 請使用能負載機器額定功率的電源
2. 保持設備的通風，遠離易燃物品
3. 將設備放置在水平平坦的表面
4. 在儲存運輸和運行環境中，請注意防水



Remove all protective materials.  
移除所有包裝物質



## Feature commentary 控制面板詳解

# 2

-  電源開關
-  倒計時開始
-  進入設置
-  數值增加
-  數值減少
-  加熱狀態



POWER	LEFT RIGHT	MODE	TIMING	PLUS	MINUS
<p>Press power button at back of the machine, it will start to heat and air inflating by itself after five seconds.</p>	<p>Press left button, start heating Press right button, start heating.</p>	<p>State 1: Short press to set temperature. Press again to set time. State 2: Press 5 seconds to set pre-heating temperature to avoid mug pad air burning.</p>	<p>State 1: Press TIMING one time to start. State 2: Press 4 seconds to reset. State 3: Can be used as "+" and "-" under stand-by state.</p>	<p>State 1: You can increase value under setting state. State 2: Press 5 seconds, hear one beep, you can press "-" to set processing capacity.</p>	<p>State 1: You can decrease value under setting state. State 2: Press 5 seconds, hear one beep, press "+" to set processing capacity.</p>
<p>打開機器後面船形電源開關，機器通電，5秒後自動開始加熱并衝氣。</p>	<p>打開左邊加熱開始 打開右邊加熱開始</p>	<p>狀態1： 短按進入溫度設置 再按進入時間設置 再按退出 狀態2： 長按5秒進入預熱溫度設置，預防烤杯墊空燒。</p>	<p>狀態1： 按一下倒計時開始 狀態2： 長按4秒計時復位 狀態3： 在待機狀態下可當+-號使用</p>	<p>狀態1： 在設置狀態下可增加數值。 狀態2： 長按5秒後滴一聲響後再按+號，可設置加工數量。</p>	<p>狀態1： 在設置狀態下可減少數值。 狀態2： 長按5秒後滴一聲響後再按-號，可設置加工數量。</p>

### 組合鍵功能解說

#### 1、預熱溫度設置



+5s

長按5秒時入預熱溫度設置，出廠初始溫度為100度。

#### 2、加工量設置



先長按 "+" 2秒聽到蜂鳴一聲， "+" 不鬆開，再按下 "-", 蜂鳴一聲。進入計數設置。鬆開按鍵後，按 "+" "-" 調節加工數量。

#### 3、總量統計



先長按 "-" 2秒聽到蜂鳴一聲， "-" 不鬆開，再按下 "+", 蜂鳴一聲。進入從出廠到當前總的數量統計。

Function Commentary of Combination Key

1. pre-heat temperature setting



Press 5 seconds start pre-heat temperature setting. Factory default temperature is 100°C.

2. processing capacity setting

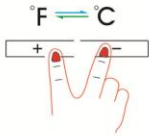


Press "+" for two seconds, hear one beep, keep press. Then press "-", after hear one beep, you can set. Release button, press "+" and "-" to set amount.

3. gross statistics



Press "-" for two seconds, hear one beep, keep press. Then press "+", after hear one beep, you can see the gross statistics from factory default to now.

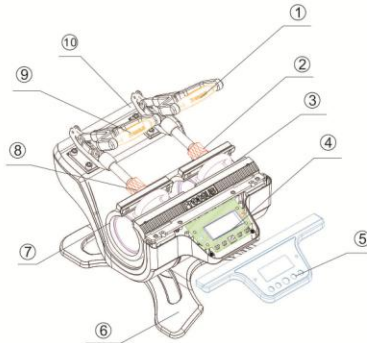


注意：同時按住 (+ / -) 鍵可快速實現攝氏度和華氏度之間的轉換。

Attention: Press (+ / -) at the same time, you can switch between °F & °C.

Accessory Name Graphic

3



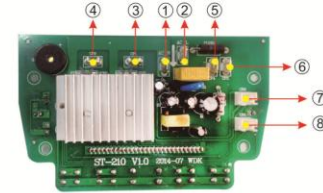
- 1. 右压力手柄 1.right pressure handle
- 2. 右调节螺丝 2.right adjusting screw
- 3. 右堵杯垫 3.right mug pad
- 4. 电路主板 4.circuit board
- 5. 前电路盖板 5.front circuit cover
- 6. 镁合金底座 6.magnesium alloy base
- 7. 左堵杯垫 7.left mug pad
- 8. 左调节螺丝 8.left adjusting screw
- 9. 左压力手柄 9.left pressure handle
- 10. 堵杯垫接线位 10.mug pad terminal block

1 connection method 电路板的接线方法

2 power cord colors 电源线颜色

- 1. 白色 (主进线+)
- 2. 咖啡色 (主进线-)
- 3. 兰色 (左发热垫+)
- 4. 红色 (右发热垫+)
- 5. 黑色 (左发热垫-)
- 6. 黑色 (右发热垫-)
- 7. 右温度探头
- 8. 左温度探头

- 1. white
- 2. coffee
- 3. blue
- 4. red
- 5. black
- 6. black
- 7. right temperature detector
- 8. left temperature detector



Transfer tips

Question: Transfer paper shows yellow after printing. Or writings on the picture seems faint.

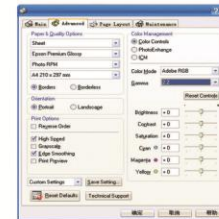
Answer: Lower temperature and reduce the heating time. Question: Paper still keep white after printing, and picture color on products don't show good. Sometimes get white stain

Answer: Higher temperature and increase time.

Question: Effect is not good in some condition. Answer: The temperature and time have to be changed accordingly due to different paper, products, machines and weather condition.

轉印技巧:

轉印時如紙發黃、圖片黑色文字發虛時，應降低溫度及減少時間，如：轉印紙還是白色、圖片色彩不鮮豔，有白色斑點或部分沒有轉印上去，請加高溫度或延長時間。全圖圖片應加長轉印時間，因產品種類、圖片色彩、紙張不同、機器溫差、天氣溫差等不同原因，轉印時溫度及時間會有一些微調。



Answers to questions 常見問題解答

4

保修卡 WARRANTY CARD

用户姓名 The name: \_\_\_\_\_  
 联系方式 Contact: \_\_\_\_\_  
 購買日期 Date: \_\_\_\_\_  
 經銷商 Dealer: \_\_\_\_\_

FreesUB

Product certification 產品合格證  
 檢驗員 Examiner: \_\_\_\_\_  
 日期 Date: \_\_\_\_\_